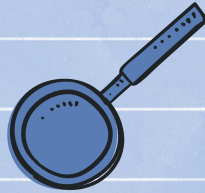
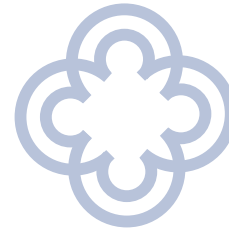


EDUCATE & CARE



SPARTA AREA
SCHOOLS



How do Sparta elementary schools respond to students' social emotional needs?

All students at Sparta elementary schools have access to the following [Tier 1](#) supports:

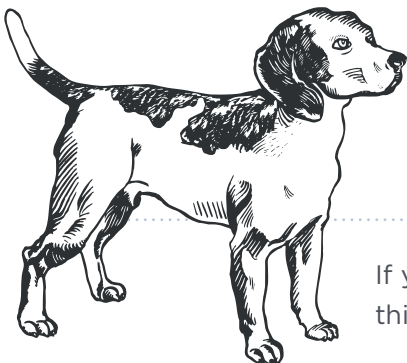
- Classroom lessons using [Michigan Model for Health Curriculum](#)
- Wellness Survey (monthly)
- Positive Behavior Interventions and Supports (PBIS)
- Big Ideas Assembly (monthly)
- [Kids Have Rights](#)
- Staff Training - [Capturing Kids' Hearts](#)
- Success Center/Safe Room
- Global Play Day
- Parent Teacher Conference
- Morning Meetings
- [Kindness Month](#) (Applevue)
- Access to [Toast the comfort dog](#) (Applevue)

Additional interventions available to some students in need of [Tier 2](#) supports:

- Behavior Plans/Check In Check Out (CICO)
- Group/Lunch Bunch meetings
- Kids Hope Mentors
- HS Mentors
- Student Support
- Child Study

More targeted interventions for students in need of more intense [Tier 3](#) supports:

- Individual, school-based counseling
- Kent School Services Network long-term therapeutic counseling
- Special Education Services- including school social work
- 504 plans
- FBA (functional behavioral assessment)



If you would like to speak to one of our student support staff regarding any of this information or if you have other questions/concerns, please [contact](#) us.