



# Sparta Area Schools

2019-20

PA 25/451

## TABLE OF CONTENTS

OVERVIEW PA 25/451	<b>ERROR! BOOKMARK NOT DEFINED.</b>
DISTRICT PROFILE	4
2018-19 MANAGEMENT TEAM	4
2018-19 BOARD OF EDUCATION	4
PROCESS & FLOW CHART FOR SCHOOL IMPROVEMENT PLANNING	5
MISSION STATEMENT	6
Core Principles	<b>Error! Bookmark not defined.</b>
DISTRICT	
VALUES.....	7
STRATEGIC PLAN 2018-19	8
2018-19 DISTRICT SCHOOL IMPROVEMENT	9
CORE CURRICULUM	10
PARENT PARTICIPATION	9
POST SECONDARY OPTIONS	10
ENROLLMENT	
PROCEDURES.....	12
SPECIALIZED SCHOOLS	12
DISTRICT MAP	13

## OVERVIEW OF PA 25/451 REPORT

The PA 25/451 Annual Report is a requirement by the State of Michigan.

The contents are part of the Annual Educational Report : designed to share District and Building-Level information including student achievement and performance, state accreditation status, teacher quality and certification, school improvement, community participation and involvement, and opportunities for students attending Sparta Area Schools. Should you have any questions or desire additional information, please contact Joel Stoner at [joel.stoner@spartaschools.org](mailto:joel.stoner@spartaschools.org).

### **Overview of PA 25/451 Information**

The PA 25/451 report begins with Sparta Area Schools District profile. The 2019-20 grade spans and programs provided within each building are presented, along with the total number of students attending Sparta Schools this past year. The District Management Team and Board of Education Members for the 2019-20 school year are also listed within the profile. The report includes information regarding the District Strategic Plan. The Strategic Plan is designed to guide the decisions and culture of our organization.

A school improvement flowchart is presented as an outline for the school improvement processes used for plan development, implementation and evaluation. The District School Improvement Goals, which are shared among all buildings in the district, are also presented within this document. For further detail, the most recent District and Building School Improvement Plans may be accessed on the District and Building Annual Education report websites.

The PA 25/451 reporting requirements require information about the status of the district curriculum, the processes engaged for review and revision and how stakeholders can access further information about the curriculum.

This report presents the required information: the participation rates of Parent/Teacher Conferences for each building; information regarding post-secondary options and proficiency rates; enrollment information and specialized schools available to Sparta students.

The partnership between the Sparta School District and the members of the Sparta community is essential for the success of our students. The Annual Education Report is designed to inform the public about our school district. It is our intent to provide the Sparta Educational Community with required and necessary information to create awareness, and support the engagement and active participation of stakeholders.

## DISTRICT PROFILE

Sparta Area Schools comprises five area buildings. During the 2019-20 school year, White Early Childhood Center was home to district and GSRP preschool, early-on childcare programs, and Bright Beginnings home to school program. Ridgeview Elementary served students in the Early Childhood Special Education program, Great Schools Readiness Program preschool, Kindergarten, First and Second grades. Applevue Elementary was home to students in grades three through five and housed the district Before and After Care (BAC) program. Sparta Middle School served students in grades six through eight. Sparta High School served students in grades nine through twelve, including services provided through the High School Career Academy.

Sparta received a state reimbursement of \$8111 per student in 2019-20, enrolled 2,465 students in our ECSE through twelfth grade programs.

### 2019-20 MANAGEMENT TEAM

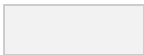
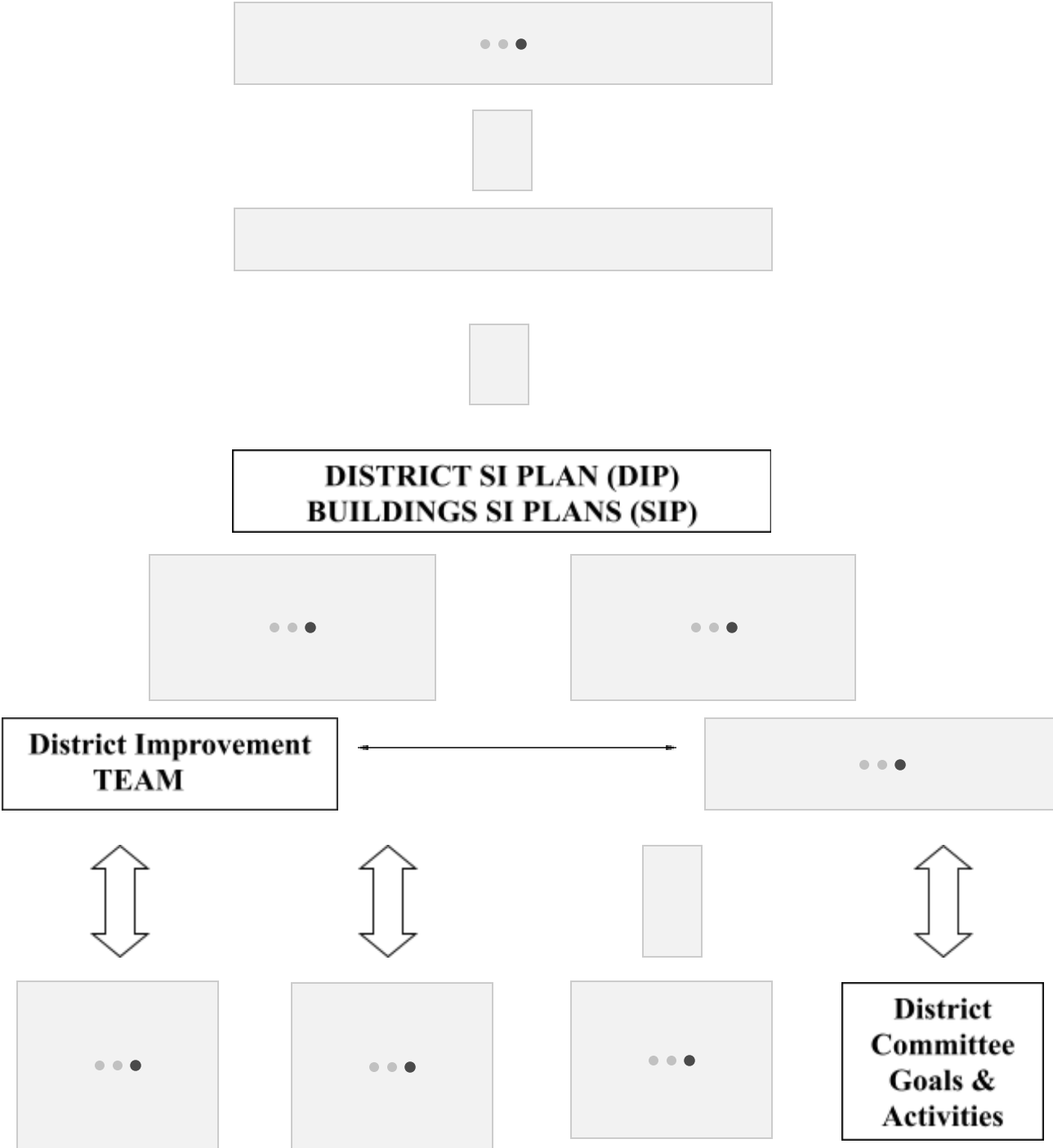
Mr. Pete Bush	Superintendent	887-8253
Mr. Joel Stoner	Executive Director of Student and Academic Services	887-8253
Mr. Matti Sullivan	Director of Finance and Operations	887-8253
Mr. Matta Spencer	Principal, Sparta High School	887-8213
Ms. Kelly Rider	Athletic Supervisor	887-2098
Mr. Brad Wood	Principal, Sparta Middle School	887-8211
Mr. Mike Birely	Principal, Applevue Elementary	887-1743
Mrs. Heather Guerra	Principal, Ridgeview Elementary	887-8218
Ms. Deb DuFour	Coordinator of Title Grants	887-7359
Mrs. Tina Mortensen	Supervisor, Special Education	887-7359
Ms. Heather Holland	Director, Adult Education	887-7321
Ms. Amy Waldron	Director, WECC	887-2098
Ms. Robyn Tryon	Director, BAC	887-2098
Mr. Terry Johnson	Director, Operations	887-0136
Mrs. Melissa Alley	Food Service Director	887-1744
Mr. Rob Egeler	Director, Technology	887-8213

### 2019-20 BOARD OF EDUCATION

Andy Jensen, President  
Amanda VanStrien, Vice President  
Pam May, Trustee  
Kim Eluskie, Trustee

James Kerby, Trustee  
Mark Alster, Secretary  
Marybeth Dame, Treasurer

# Sparta Area Schools Process for School Improvement Planning Flow Chart



# Sparta Area School Strategic Plan



## Sparta Area Schools

### Goals – 2019-24



## **MISSION STATEMENT**

Cultivating a dynamic, compassionate community that empowers all learners to lead successful lives.

## **VISION STATEMENT**

Creating valuable relationships and innovative learning experiences within our schools and community that empower all learners to thrive and excel.

***STATE OF THE ART...SMALL TOWN HEART***

## **CORE VALUES/BELIEFS**

We believe:

1. Caring, trust, and a sense of belonging are essential for success.
2. Each person has unique and intrinsic worth and deserves to be treated with respect.
3. A high-quality learning environment is best achieved when school, home, and community build healthy relationships and work together.
4. A diversity of backgrounds, heritage, families, and viewpoints strengthen us.
5. All students are capable of learning and deserve a safe environment, both physically and emotionally.
6. High expectations, based on challenging, relevant learning experiences leads to exceptional growth.

## **2019-20 DISTRICT SCHOOL IMPROVEMENT**

The 2019-20 Building and District Improvement Plans are on file in each building office and are posted with the State of Michigan through the Advanced Ed website. The plans are developed using the Michigan school improvement processes and protocols to include goals, objectives, strategies, activities and resources. The annual Professional Development Plan is also developed as part of the SI process with the focus areas directly linked to the District and Building Plans.

While the objectives, strategies, activities and resources vary amongst buildings, the goals are consistent throughout the District and Building SI Plans.

1. All students will be proficient in ELA and Content Area Reading
2. All Students will be proficient ELA and Content Area Writing
3. All Students will be proficient in Math
4. All Students will be proficient in Science
5. All Students will be proficient Social Studies

## SAS CORE CURRICULUM

The curricular expectations are changing throughout the district, the state and the nation at this time. The state formally adopted the Common Core State Standards in English Language Arts, Mathematics and Literacy in Science, Social Studies and the Technical Subjects. The State Board also adopted new MI Science Standards in 2016. During the last few years our district continued revising district curricula to align with the new state and federal standards. Virtually all grade and course level content areas are considered “in-progress”, yet much headway has been made to have a viable curriculum especially in the core content areas of Math, ELA and Social Studies, the Arts and World Languages.

The basic process used includes an analysis of the new standards and assessments to clearly articulate what students are expected to know and so to identify critical vocabulary, learning targets and assessment targets for each of the standards; organizing the standards into instructional units, revising the scope and sequence; revising the instructional resources and materials used in the units of instruction; and creating common content area assessments for the instructional units at the grade and course level which are aligned to the new standards.

Revisions to the district curriculum will likely continue for multiple years as more clarifying information is released by the state, and decisions about state assessments are finalized by the Michigan Department of Education and State Legislature. Updates can be accessed through the Assistant Superintendent in the central office and building administration. The curriculum expectations are communicated with the students and parents through a variety of methods including: parent student orientations, course syllabi, report cards, parent/teacher conferences, building/classroom newsletter and pacing guides are being placed on the district website as completed for public awareness viewing.

## SAS PARENT PARTICIPATION

The Sparta Area Schools staff recognized that education is a partnership between parents and teachers. Only with the active involvement of a child’s parents can that child’s educational opportunities be maximized. Therefore, Sparta staff seeks to have parents involved - in their classrooms, on field trips, planning activities, mentoring, fund-raising, advising and chaperoning. The opportunities are limitless; the need, abundant. We welcome and request parents to be actively involved with us. (*Policy #2112*)

<b>Parent/Teacher Conference Attendance</b>	<b>Fall ‘19</b>	<b>Spring ‘20</b>
Ridgeview Elementary	88%	94%
Applevue Elementary	91%	92%
Sparta Middle School	37%	NA
Sparta High School	18%	15%



## SAS POST SECONDARY OPTIONS

	2017-18	2018-19
Number and % of Post-Secondary Enrollments	104/12%	172/70%
Number of College Equivalent Courses Offered	20	43
Number and % of students who took College Equivalent Courses	791/41.8%	798/52.3%
Number and % of Students Receiving a Score Leading to College Credit	252/76.1%	195/47.5%

## SAS ENROLLMENT PROCEDURES

To enroll in Sparta Area Schools please visit the District Website at <http://www.spartaschools.org/> .

The information is available under the Parents/Students link located on the navigation bar at the top of the page. Enrollment information is continually updated and the site also contains necessary information regarding Schools of Choice and Release of Students (section 6). Enrollment procedures for Students who are new to Sparta Area Schools can be found at <http://www.spartaschools.org/parentsstudents/newstudentinformation/>

Enrollment, contact and general information for specific age groups is located within each building's website:

**WECC White Early Childhood Center** <http://www.spartaschools.org/wecc/>

**Ridgeview Elementary K-2** <http://www.spartaschools.org/ridgeview/>

**Appleview Elementary 3-5** <http://www.spartaschools.org/appleview/>

**Sparta Middle School 6-8** <http://www.spartaschools.org/middleschool/>

**Sparta High School 9-12** <http://www.spartaschools.org/highschool/>

## Specialized Schools

Sparta Area Schools' students may attend and receive specialized services from the following programs in Kent County:

<b>SCHOOL</b>	<b>DESCRIPTION OF DISABILITY</b>
<b>KISD Center Programs:</b>	
KEC Oakleigh/Mayfield/Beltline	Severe Emotional Impairment
Shawnee Park	Hearing Impairment
Northview Deaf/Hard of Hearing Program	Hearing Impairment
Lincoln School/Lincoln Developmental Center	Multiple Impairment/ Autism Spectrum Disorder/ Severe Cognitive Impairment
Kent - Vocational Options	Cognitive/Multiple Impairment
Kent Transition Center	Vocational Training
Kent Career Technical Center	Vocational Training
Ken-O-Sha Center at Wellerwood School	Preschool Severe Multiple Impairment/Autism
<b>Regional Programs:</b>	
Kenowa Hills/Rockford/Northview ASD Program	Autism Spectrum Disorder
Cedar Springs/ Kenowa Hills/Rockford MiCI Program	Mild Cognitive Impairment
Region 1 Transition Services (Cedar Springs/Rockford)	Vocational/Transition Program
Comstock Park/Kent City/Northview EI Programs	Emotional Impairment

Sparta provides regional programming for students with Moderate Cognitive Impairments (MOCI) at all levels, and Mild Cognitive Impairments (MICI) exclusively at the HS level.

The process to assign students to a specialized program is an IEP decision based on a review of the Multi- Disciplinary Evaluation Team reports, the present level of academic achievement and functional performance, and behavior plans and observation of the student if needed. The sending school, receiving school, and parent(s) work together to facilitate this process.

# DISTRICT MAP

