



SPARTA AREA SCHOOLS

BELL RINGER

Home of the Michigan Blue Ribbon Exemplary School

www.spartaschools.org

Vol. 30, No. 1 • Aug./Sept./Oct., 2010



A Strange Foam Discovered at the Middle School

By Zac Curtis and Maddie Rummler

The Kent Intermediate School District had a few of their specially trained instructors from the Aeronautics Education Lab, stop by the 8th grade science classes at the Middle School and get things foaming with a chemical reaction that got students talking. The purpose of the lab was to teach these 8th grade students about the types of plastics that NASA uses in their rockets and shuttles and let them experience making them.

The plastics lab consisted of a few chemicals that when mixed together made a root beer looking foam. There were two plastics made: A higher tougher plastic and a softer lower one that the students enjoyed creating. "I really liked how the cup started getting hot," said Karen Ramirez, a student, "It was also really cool watching it grow!"

"My favorite part was mixing the chemicals," said Joe Ridout, another student.

The students were allowed to take their creations home. This plastics experiment was a fun chance to experience science in a different way in the classroom and informed the class about the way NASA works and how plastics are used in everyday life. All in all the students had fun, enjoyed the lab and hope they can use what they learned in the years to come attending the district's summer camp program have been in charge of watering throughout the summer.



Website Update Info Quick!

Looking to find out when your child's field trip is? or conference date? Wondering what time the HS dance ends? Beginning in September, the district website tab marked "Calendars" will contain a drop-down menu linking you to each building's calendar - featuring dates for the entire year. No longer will you need to call the building to learn what time your child will return from the 5th grade Lansing trip or when senior baby photos are due. The calendar will be as comprehensive as we can make it. Our goal is to provide parents and students with one stop - to get you the info you need. (Other calendar links - "District Calendar" and "X-tra Curricular Events" show information beyond the school day).

WELCOME BACK

By Kent Swinson, Superintendent

The beginning of a new school year holds the promise of opportunities for all students. It is normal that each fall brings a certain amount of change, and certainly 2010-11 will be no exception. What does remain constant is the Sparta Area Schools' focus and commitment on putting "students first". On behalf of the Board of Education, it is a pleasure to welcome back both new and returning students to the district. Through a working partnership with parents, students, and staff our hope is for all students to experience a successful school year.

The economy and school funding has forced the district into re-structuring the delivery of services to provide quality educational programs. The process will continue evolving in order to address funding issues, curricular revisions, instructional methods, state or federal requirements, and most importantly the needs of our students. The one constant is the goal of continued school improvement.

It is important to recognize the leadership of our Board of Education in making wise decisions, allowing the district to weather the economic storms of the past years. Even after making millions of dollars of reductions since 2000-2001, we have been able to maintain reasonable class sizes, offer a wide variety of student activities, avoid mid-year cuts, refrain from staff layoffs, be fiscally responsible with public monies, and improve academic achievement. The challenges remain, but with the support of the community and staff we have come a long way.

May the wonders of a new school year hold many valuable experiences for all students. I believe the quote by W. Somerset Maugham applies to schools, "It is a funny thing about life; if you refuse to accept anything but the best you very often get it."

*Have a great 2010-11 school year,
Kent*

Classes begin for all students on Tuesday, September 7

TABLE OF CONTENTS

District News,	1-3, 16
White Early Childhood Center	4
Ridgeview Elementary	4-5
Appleview Elementary	6
Sparta Middle School	6-7
Sparta High School	8
Englishville High School	9
Transportation Guidelines & BUS ROUTES.....	9-12
Food Service Information.....	12-14
Legal Notices.....	15
Athletics	16
Community Corner	16

Sparta Community Education
Fall Class Schedules will be distributed in the Sparta/Kent City Advance.
Look for yours soon!

Call the Sparta Community Education Office at 887-7321 for more information.

District Phone Directory

BOARD OF EDUCATION 465 S. Union St **887-8253**

Warren Hill, President	Jim Kerby, M.D., Trustee
Carol Shirey, Vice President	Nick Lewis, Trustee
Julie McCallum, Secretary	Tom DuPont, Trustee
Clay Brown, Treasurer	

ADMINISTRATION 465 S. Union St..... **887-8253**

Superintendent.....	Kent Swinson
Finance Director.....	Deb Berenbrock
Assistant Superintendent.....	Mark Kasmer
Central Office Secretary.....	Shelly Dunneback
Payroll - Kim Anderson.....	887-9349

SPARTA HIGH SCHOOL 475 W. Spartan Dr..... **887-8213**

Attendance Line.....	887-1741
Principal.....	Matt Spencer
Asst. Principal.....	Cary Stamas
Athletic Director.....	Joe Droski
Athletic Department Secretary.....	Theresa Wescott
Secretaries.....	Marilynn Bitely/Pam Reyers/Karen Bosscher
Social Worker.....	Michael Harris
Counselor.....	Adam Pfeffer
Food Service - Tim Kleaveland.....	887-1744

ENGLISHVILLE HIGH SCHOOL 8285 Vinton Rd..... **887-7316**

Principal.....	Matt Spencer
Secretary.....	Sue Porter
Social Worker.....	Michael Harris
Counselor.....	Kathy Rebh

SPARTA MIDDLE SCHOOL 280 S. State St..... **887-8211**

Attendance Line.....	887-1079
Principal.....	Joel Stoner
Asst. Principal.....	Steve Johnson
Secretaries.....	Kim Pfeffer/Brenda Kline/Denise Sheneman
Counselors.....	Kathleen Shook/Karyll Russell
Social Worker.....	Jon Long

APPLEVIEW ELEMENTARY 240 E. Spartan Dr..... **887-1743**

Attendance Line.....	887-2091
Principal.....	Kris Vydareny
Secretaries.....	Patty Anderson/Pat Cavalier
Social Workers/Counselors.....	Sue Verduin-Miller/Ellen DeKoster

RIDGEVIEW ELEMENTARY 560 W. Spartan Dr..... **887-8218**

Attendance Line.....	887-2090
Principal.....	Nicole Peterson
Secretaries.....	Lisa Hunter/Lea Jones/Debby Tramper
Social Worker.....	Jon Long

SPECIAL EDUCATION 480 S. State St..... **887-7359**

Attendance Line.....	887-1922
Special Education Supervisor.....	Sue Gates
Special Education Secretary.....	Rose Hunter-Faurot
Psychologists.....	Dr. Katie Bolt/Laurie Kraus

WHITE EARLY CHILDHOOD CENTER

COMMUNITY EDUCATION 1655 12-Mile Rd..... **887-7321**

Director, District Grants & Auxiliary Programs.....	Marialyce Zeerip
Director, Smart Start Childcare.....	MaryRose Johnson
Secretary/Program Coordinator.....	Pam Kik
Before and After Care (BAC).....	887-1449

SMART START CHILDCARE..... **887-7510, ext. 208**

TRANSPORTATION/OPERATIONS 429 Union St..... **887-0136**

Transportation Assistant.....	D'Arcy Menzel
-------------------------------	---------------

GENERAL INFORMATION

Benefits/Payroll - Kim Anderson.....	887-9349
Drivers Education.....	887-8213
Enrolling.....	Call the specific school
Food Service - Tim Kleaveland.....	887-1744
Maintenance/Buildings/Grounds - Tony Smolinski.....	887-0136

Administrative Office Summer Hours

The administrative office will be open Monday through Thursday from 7:30 a.m. - 3:30 p.m. August 2 through August 20.

SPARTA AREA SCHOOLS

OUR PURPOSE is to teach children the skills and attitudes needed to be productive members of society in order to improve the quality of life for all.

Sparta Area Schools 2010-11 Calendar

First Day of School.....	September 7 T
Homecoming.....	October 1 F
Thanksgiving Recess (No School).....	November 24-26 W-F
Last day of School for Students.....	December 17 F
Christmas Vacation (No School).....	December 20-December 31
School Resumes.....	January 3 M
Teacher Work Days (No School).....	January 20-21 Th-F
Teacher Work Day (No School).....	March 31 Th
No School.....	April 1 F
Spring Break (No School).....	April 4-8 M-F
Good Friday (No School).....	April 22 F
Teacher Work Day (No School).....	May 20 F
Memorial Day (No School).....	May 30 M
Englishville Graduation.....	June 1 W
High School Graduation.....	June 2 Th
Last Day of School.....	June 9 Th

The above calendar shall be limited by and subject to the provisions of state law governing the make-up of days missed due to emergency closing. Days not required by law for make-up shall not be added to the calendar year. School days which must be made up for State Aid purposes will be scheduled at the end of the school year. Further, any change in State law which negates the make-up of days missed due to emergency closing shall be in immediate effect in regard to the calendar, and days missed shall not be subject to make up.

Welcome to the 2010-11 school year! Sparta students will start school on Tuesday, September 7, 2010. A special "Back to School Handbook" can be found with details about registration times and tentative school hours for each school.

Please do not contact the schools for information on your child's classroom assignment. Check the individual building information on specific posting dates. Over the summer many families move into the Sparta School District. Due to late registrations, class lists cannot be completed until this time.

Food Service Prices



RIDGEVIEW AND APPLEVIEW ELEMENTARY, grades K-5: \$1.85/lunch, \$1.25/breakfast
MIDDLE SCHOOL, HIGH SCHOOL, ENGLISHVILLE, grades 6-12: \$1.90 - \$2.45/lunch, \$1.30/breakfast

SEE PAGES 12-14 FOR REDUCED PRICE OR FREE MEALS PROGRAM INFORMATION AND APPLICATION.

Bell Ringer Due Dates

The *Bell Ringer* communicates with the residents of the school district five times per year. If you wish to have an article or "Community Corner" notice considered for publication, please email it to shelly.dunneback@staff.spartaschools.org. Please use only MS Word or Corel WordPerfect for your format.

The *Bell Ringer* is distributed in the first issue of the *Advance Newspaper* in November, January, March, June and August. If you are not receiving the *Bell Ringer*, please contact the Advance at (1-800-439-0960). Issues of the *Bell Ringer* are also available for download at www.spartaschools.org.

Deadlines to submit information:

November 2, 2010 issue.....	due October 6
January 4, 2011 issue.....	due December 8
March 1, 2011 issue.....	due February 2
June 7, 2011 issue.....	due May 4
August 2, 2011 issue.....	due June 22

PTC News

General meetings are held 6:15-7:15p.m. in the High School Media Center on the following Mondays: September 13, October 11, November 8, January 10, February 14, March 14, April 18, May 9.
Contact Kristin Armock, President (KristinArmock@aol.com) with questions.

Special Education Office

Special Education Department is located at the middle school. The address is 480 S. State St. Sparta MI. The telephone number is 887-7359.



Congratulations to our retirees!

Ridgeview Elementary



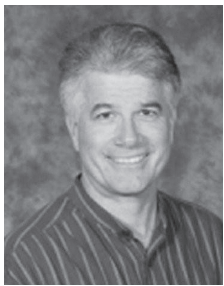
Deb DuFour, Principal

"To teach a child is to touch the future". Mrs. Deborah Dufour has truly touched the future after working with kids for 33 years in education. For the last 16 years she has served the Sparta Community as the Principal at Central Elementary and Ridgeview Elementary. Mrs. Dufour made the decision to retire as Principal and begin the next chapter of her life. She will balance her time between her passion for education and pursuing other interests outside of education. She will be returning to the district on a part time basis as the district's Response to Intervention Coordinator.



Joy Edwards, Young 5's Teacher

Joy has been a teacher for 33 years; Young 5's and at the middle school. Her fondest memories are getting hugs from the youngest students and the graduates remembering her name! "Thank you to all the parents I have been privileged to know, the great staff and administration and the Boards I have worked with and especially all the students that have truly filled my life with joy. I have loved every minute of teaching here at Sparta and deciding to retire was the hardest decision of my life thus far."



Jeff Schroeder, 2nd Grade Teacher

Mr. Schroeder has retired and will be moving on to a part-time position at the Middle School. He has been an educator in our Sparta Community for 23 of his 26 years in education. He spent 8 years with students who were mildly cognitively impaired and has spent the last 15 years inspiring second graders to do great things. When walking by his room you would often hear him serenading through his gift of music.



Susan Van Slooten, Kindergarten Teacher

"I would like to thank the Sparta community for providing me with 37 wonderful years of teaching. It has been a privilege to have worked with over 1352 children and their families who have touched and enriched my life in immeasurable ways."

Applevue Elementary

Shirley Beda, 3rd Grade Teacher

In 1997, Shirley came to work in Sparta, where she taught 4th and 3rd grades. "The thing that I will miss the most is the contact I have with students from previous years. I enjoy seeing them grow up and watching their school progress. I will also miss the daily interaction with my fellow teachers. I look forward to some time to become healthy, spending time at our lake place, traveling and spending more time with my family."



Barb Powell, Food Service provider

Barb has worked for Sparta for 20 years. She has worked in several buildings around the district, in a variety of food service positions. For the past several years, Barb has been the lead server at Ridgeview/Applevue. Barb often has adults ask her, "aren't you the lunch lady?" She enjoys seeing the students grow up and will miss the daily interaction she has with them as well as with the staff. Barb and her husband, Al have coached the Sparta High School bowling program since its inception 11 years ago. They have had much success working with Sparta's young bowlers to improve their game. Now, Barb is looking forward to gardening, golfing, bowling and taking care of her first grandchild.



Sue VerDuin-Miller, Elementary School Social Worker

Sue started working for Sparta in 1982. Sue has served as the cheerleader and information source for cooperative discipline and the child study process, for the conflict resolution process and positive awareness weeks. She has worked with the administration and staff to maximize the effectiveness of our safe room and has written scores upon scores of behavior and (school) work completion plans for students. She has taught self-esteem and parenting groups and leads student groups including those centered around substance abuse, loss, social skills and parents' divorce. Sue is also Applevue's MEAP coordinator. We are fortunate to Sue return half time next year, so she will continue with many aspects of her current job. She most enjoys working with students to help them gain insight into their own behavior and sometimes - that of their peers. She loves working with them as they use those insights to make better choices.

Middle School

Jim Zwarenstejn, Band Teacher

Jim has worked for Sparta Area Schools for 22 years as mainly a band teacher. He has also taught various other courses such as Wellness, Physical Education and Computer. He will return part time for the 2010-2011 school year to continue that work. Jim has fostered the appreciation of music in multiple generations of Sparta families.

Sharon VerHage, Science Teacher

Sharon has worked for Sparta Area Schools for 22 years as a teacher in mainly fifth and seventh grades but also spent time teaching Home Economics. She has been a building leader in the area of science, and her knowledge will be greatly missed. Sharon is looking forward to enjoying her family and gardening in her retirement.

High School



Mrs. Deb Hull, Teaching Assistant

Debi is retiring from Sparta Area Schools after 25 years of service. Debi has fulfilled a number of roles in our district as a Teaching Assistant, at Central Elementary in the library and on the playground, a Special Education TA at Sparta Middle School, Responsible Thinking coordinator at the middle school, and a Special Education TA at Sparta High School. Sparta High School would like to thank Mrs. Hull for all of her time and efforts.



Dave Stoy, Teacher

Dave is retiring from Sparta Area Schools after serving our school community for over 40 years as a teacher and a coach. During his career Mr. Stoy has taught shop classes, drafting, math, physical education and tech exploration. He has coached football, baseball, and track. Mr. Stoy will teach four classes next school year as a returning retiree. Sparta High School would like to thank Mr. Stoy for his continued commitment to Sparta Area Schools.

Englishville High School

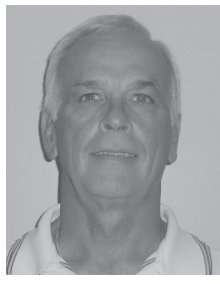
Ken Willison, Principal

If one were to put a face on "passion for alternative education", it would be Ken Willison. After 30 years in education, with the last 20 in Sparta, Mr. Willison decided it was time to move on to the next chapter of his life. Since coming to Englishville as Principal in 1990, he has been the driving force behind alternative education. His influence has not only been felt in Sparta, but also in Kent County, as well as, throughout the state. Although Mr. Willison will no longer be the Englishville Principal, he will be returning on a part time basis as the district's testing consultant. We thank him for his many contributions to the Sparta Area Schools, and wish him all of the best of luck in the future.

District Services

Sue Gates, Special Education Supervisor

Sparta Area Schools has been fortunate to have had Sue Gates serve as our Special Education Director the past four years. Prior to coming to Sparta, Mrs. Gates worked for the Cedar Springs School District in Special Education. Her 32 year career in education has included a variety of roles such as teaching, consulting, and administration. As a retiree, we are lucky to welcome Mrs. Gates back next year on a part time basis. She will continue to oversee Special Education programs to the benefit of the district and students.



Tony Smolinski, Transportation Director

The main reason Sparta Area Schools' has run so well over the last 15 years is due to Tony Smolinski filling the role of Director of Transportation and Operations. Mr. Smolinski started in Sparta in 1995 quickly becoming an invaluable member of the administration. Although many of the duties were not always visible, managing the transportation system, overseeing the maintenance of facilities, and supervising operations are all critical to a successful school district. We appreciate the way Mr. Smolinski has effectively kept our district running. Although retiring, we will not completely lose him as he will return on a part time basis in 2010-11. The district is thankful for his work and dedication over the years.

Thank you to all the retirees for their hard work and dedication to Sparta Area Schools.



WHITE EARLY CHILDHOOD CENTER

Summer Hours at White Early Childhood Center & Sparta Community Education

August 2 - August 20.....Monday - Thursday 8:00 a.m. - 3:30 p.m.

Sparta Area Schools Overhauls Childcare and Preschool Services

Sparta Area Schools is making significant changes in preschool and childcare programming. With the exception of the Great Start Readiness and the Early Childhood Special Education Programs, all preschool programs will be provided through the Smart Start Childcare at the White Early Childhood Center located on 12-Mile Road. Childcare for Kindergarten students will no longer be part of the Smart Start Childcare program; rather, all extended childcare for kindergarten students will be part of the Before and After Care (BAC) Program. All program information for Childcare, Preschool and BAC go through Pam Kik in the Community Education office at White Early Childhood Center (887-7321).

New Approach to Preschool

All preschool programming in Sparta will follow the Great Start Readiness Program Guidelines. The new model is based upon what is known as the High Scope Philosophy. High Scope is a developmentally appropriate approach to learning combining direct instruction w/orchestrated play. Using specific intended learning outcomes from Creative Curriculum and State of Michigan Preschool Standards and Expectations, preschool is moving from a three day program to a four day program (Mon.-Th.) for 4 year olds and from a two day program to a three day program (Tu-Th) for 3 year old preschoolers. The program will also increase the daily service hours to 3 hours per day for four year olds and 2.5 hours for three year old preschoolers. The daily rate will remain at \$12.

Preschool Service Calendar Follows the District School Year Calendar

In addition, all 3 and 4 year old children in the Smart Start Childcare will follow the same preschool programming as part of their childcare experience during the school year. This move also offers students of families who qualify for financial assistance for childcare through the government, opportunity for a comprehensive preschool experience as part of their daily childcare. Parents interested in learning more about financial assistance programs through the State Department of Human Services/Family Independent Agency are encouraged to contact Pam Kik at 887-7321, or information can also be obtained through michigan.gov/dhs.

Smart Start Kindergarten Care Kindergarten Extended Childcare Services Change Locations

Beginning with the 2010-11 School Year, all Kindergarten Childcare services will no longer be part of the Smart Start Childcare at the White Early Childhood Center. Childcare services for all Kindergarten through 5th grade students will be part of the Before and After Care (BAC) Program. All Kindergarten childcare services during the school day (7:55 a.m.-3:20 p.m.) will be held at Ridgeview Elementary with extended day services (6:30 a.m.- 8:00 a.m. and 3:15 p.m.-6:00 p.m.) will be provided at Appleview Elementary School. Transportation to and from the extended day services at Appleview will be provided by the district.

Having Kindergarten students at Ridgeview for childcare during the school day offers a unique opportunity to provide services which enrich and extend the daily instruction provided in the kindergarten program. All instructional materials and resources are available on-site, with opportunity for ongoing dialogue between the staffs. The playground and physical plant are also conducive to this age level. It is our intent to take advantage of the location and strengthen our wrap around services to kindergarten students.

The fee is \$105 per week (\$21 per day). A \$30 non-refundable fee is due at time of enrollment. Breakfast and nutritious snacks will be provided. Children must bring a sack lunch. Children will be shuttled to and from for kindergarten.

This program will be housed at Ridgeview Elementary and begins Tuesday, September 7, 2010.

Before & After School Care

for Students in Grades K-5

"The Open Door" Before and After School Care program is open from 6:30-8:00 a.m. and 3:00-6:00 p.m., Monday through Friday. Fee per session is \$5 for mornings, and \$9.50 for afternoons. A \$30 non-refundable fee is due enrollment. The program will be open daily, including snow days, no school days, and spring break but not major holidays nor during the Thanksgiving and Christmas recess.

This program will be located at Appleview Elementary and begins on Tuesday, September 7, 2010.

All Kindergarten - 5 grade extended childcare services will be part of the district's Before and After Care Program which is part of Sparta's Community Education Program.

For more information about these programs, please contact Pam Kik at Sparta Community Education at 887-7321 or email pam.kik@staff.spartaschools.org.

Bright Beginnings Playgroup Dates and Themes

All Playgroups are located at WECC on Fridays from 10:00 to 11:30 a.m., unless noted.

Date: August 20	Date: October 8
Location: Wahlfield Park, 6811 Alpine Ave.	Theme: Going Nuts: a Squirrel Theme
Date: September 10	Date: October 22
Theme: Apples, Apples, Apples	Theme: Fall Harvest

Tuition Preschool

(Please read "New Approach to Preschool" at left)



Sparta Area Schools operates a three and four year-old preschool. Class size is limited. Classes are filled on a first-come, first-served basis according to the enrollment date. A \$30 non-refundable fee is due at time of enrollment. The fee is \$12.00 per session, which meets for, three a week, 2.5 hours per day for three-year-olds and four days a week, 3 hours per day for four-year-olds.

Eligibility:

- Child must be at least three years old but not yet five years old by December 1, 2010.
- Child must be three years old by December 1, 2010 to attend the three-year-old class.
- Child must be four years old by December 1, 2010 to attend the four-year-old class.
- Child must be toilet trained.
- District residents will receive first priority.
- Parents must provide transportation.
- Proof of immunization and a birth certificate must be presented before school starts.
- No child may enter the program unless all necessary documents are completed.

Students will attend preschool at White Early Childhood Center.

Tuition Preschool Open House at WECC

Tuesday, August 31, 2010

3:30 - 6:00 p.m

First Day of Classes and Program Hours

	First Day	Program Hours
3's	Tues., Sept. 7, 2010	T/W/Th AM ~ 8:30 - 11:00 a.m.
4's AM	Tues., Sept. 7, 2010	M-Th AM ~ 8:15 - 11:15 a.m.
4's PM	Tues., Sept. 7, 2010	M-Th PM ~ 12:30 - 3:30 p.m.

Smart Start Child Care

for children ages 3 and 4 Years Old

This program is offered throughout the calendar year including summers (provided there are enough children enrolled during the summer). Childcare will be open Monday through Friday from 6:30 a.m. - 6:00 p.m., except for major holidays, Thanksgiving recess and Christmas recess (dates to be determined). The program will remain open on snow days. Children must be toilet trained. Breakfast and nutritious snacks will be provided. Children must bring a sack lunch. Children may start attending at 2 years, 6 months as long as they are toilet trained.

The fee is \$130 per week (\$26 per day). A \$30 non-refundable fee is due at enrollment. One enrollment fee will be charged per year.

This program is housed at White Early Childhood Center.

SPARTA RIDGEVIEW ELEMENTARY SCHOOL (Preschool)

Great Start Readiness Preschool

is now accepting applications for the 2010-2011 school year. This program is free to children residing in the Sparta School District who will be 4 years of age by December 1, 2010. Students must meet two of 25 eligibility requirements (you need not be of low income). Classes meet Monday through Thursday in part day sessions.

Students will attend readiness preschool at Ridgeview Elementary.

Openings are limited; call 887-7321 for more information and for an application.

Great Start Readiness Preschool

Open House at Ridgeview

Tuesday, September 14, 2010

AM Classes 5:30 - 6:15 p.m

PM Classes 6:15 - 7:00 p.m

First Day of School Thursday, September 16, 2010

Program Hours

AM Class Monday - Friday ~ 8:10 - 11:18 a.m.

PM Class Monday - Friday ~ 12:05 - 3:13 p.m.



SPARTA RIDGEVIEW ELEMENTARY SCHOOL

Information for Specialized Programming at Ridgeview

- **ECSE – Early Childhood Special Education:**
This program serves special needs students ages 3-5, identified through an evaluation process. Students may receive speech and language services and occupational and physical therapy. Students attend half days, 2 to 5 days per week. This program follows the school year calendar. Call 887-7359 for more information.
- **ECSE – Home and Community Program:**
This program serves special education students ages 2-3, identified through an evaluation process. Students typically receive one home visit/therapy and one playgroup a week. Call 887-7359 for more information.

ECSE Open House at Ridgeview

Wednesday, September 1, 2010

3:30 - 6:00 p.m

Program Hours

AM Class Monday - Friday ~ 8:00 - 10:36 a.m.

PM Class Monday - Friday ~ 12:15 - 2:51 p.m.

Parents/guardians/students please plan on attending the Open House. This evening presentation is set up for students to meet their teachers and visit their classrooms. You will receive curriculum information as well as a school year information packet with emergency cards and school forms.

Summer Office Hours at Ridgeview

August 2 - August 26 Monday - Thursday 8:00 a.m. - 3:00 p.m.
(closed for lunch - noon to 1:00 p.m.)

Tentative School Hours

There will be a REGULAR SCHEDULE - Tuesday through Friday - during the FIRST WEEK of school.

Kindergarten AM 8:15 - 11:25 a.m.

& Young 5's PM 12:08 - 3:18 p.m.

All Day Alternate Day Kindergarten

Mon/Wed 8:15 a.m. - 3:18 p.m.

Lunch 11:23 a.m. - 12:08 p.m.

Friday AM 8:15 - 11:25 a.m.

T-1, First & Second Grade 8:15 a.m. - 3:13 p.m.

Lunch Kdg. & 1st Grade 11:23 a.m. - 12:08 p.m.

Lunch 2nd Grade, MiCI 12:03 a.m. - 12:48 p.m.

Office Hours 7:55 a.m. - 3:30 p.m.

Student Drop-off Times 7:55 a.m. (11:55 p.m. kindergarten)

End of Day Pick-up Time (10 minute time-frame)

1st & 2nd Grade 3:03 p.m. - 3:13 p.m.

Kindergarten AM, 11:15 a.m. - 11:25 a.m.

PM, 3:08 p.m. - 3:18 p.m.

(Parents must sign all children out on the yellow clipboard outside of classroom door when picking them up and ARRIVE PRIOR TO BUS LOADING.)

After school daycare is available, call 887-7321 for information.

Parent/Teacher Conferences & Book Fairs

Mon. & Tues., Nov. 22-23 & Mon. & Tues., Mar. 28-29, 3:30-7:00 p.m.

Immunization/Vision/Legal Requirements

Immunization requirements for all children entering the Michigan Schools/Sparta School District for the first time are very rigid. All new students (including kindergarten) need five doses of DPT, four doses of polio, and two doses of MMR, with the last dose given after the age of four, along with three doses of Hep B. **Also, required as of January 1, 2002 new enrollees must have the chicken pox vaccine.** For high school students, if it has been more than ten years since the last DPT shot, a booster will be required. **Additionally, incoming kindergarten students must have a vision exam on file.**

Students will not be allowed to attend school without formal documentation of their vision and immunization records.

Sparta respects the rights of all parents/guardians. Court orders restricting visitation to schools, student pick up, and/or restraining orders must have a stamped/signed court order on file upon enrollment or at the time the order takes effect.

NEW WELFARE OF A CHILD BILL

Public Act 519 became effective last April 1, 2009. This law deals with leaving children unattended in a vehicle for a period of time that poses an unreasonable risk of harm or injury to the child. The Act is basically in response to a number of incidents where children have been left for long periods of time and have died as a result of heat stroke or were injured in other ways. We wanted to make parents aware of this law since there is a potential of complaints being made to law enforcement when children are left unattended in school parking lots.

Enrollment Requirements

Must Have For All New Students: A copy of your child's official county birth certificate, social security number, proof of residency, immunization records, and vision screening document. If you did not attend WECC or kindergarten screening, they must be on file at your child's school of attendance.

Students must have these records on file by Friday, August 27, 2010 to have a classroom/teacher assignment and begin school on September 7, 2010.

Young 5's, Kindergarten, First Grade & Second Grade

Meet the Teacher Night

Wednesday, September 1, 2010

3:30 - 6:00 p.m.

Parents/guardians/students please plan on attending "Meet The Teacher" and Parent Information Night. This evening presentation is set up for students to meet their teachers and visit their classrooms. You will receive curriculum information as well as a school year information packet with emergency cards and school forms.

New Student Registration & Summer Hours

Registration: New families to the Sparta Area School district may register their ECSE, kindergarten, first and second grade children at Ridgeview Elementary beginning, Monday, August 2nd. **August Office Hours:** 8:00-12:00 am and 1:00-4:00 pm Monday to Thursday. Please call the office at 887-8218 and ask for Lisa if you need more information or have questions. The school office is closed on Fridays, August 6, 13, 20, and 27.

Class Lists Final Young 5's, Kindergarten, First and Second Grade class lists will be POSTED at the school on Friday, August 27, 2010. LETTERS OF TENTATIVE KINDERGARTEN CLASS ASSIGNMENTS AND INFORMATION WILL BE SENT OUT NO LATER THAN EARLY JULY, (if you completed enrollment with four required documents).

RIDGEVIEW ELEMENTARY SCHOOL SUPPLY LIST

2010-2011 School Year

Please DO NOT label with students name, items will be used as classroom supplies.

Young 5's

4 Elmer's Washable Glue Sticks large size only (.77 oz.)

(The small glue sticks dry out quickly and break off easily)

Crayola Crayons 8 pack - (not larger/smaller amounts)

1 package computer paper

8 pack Washable Crayola Markers

Girls = 1 box Kleenex and 1 package Clorox disinfectant wipes

Boys = 1 roll paper towel and 1 package napkins

Kindergarten

6 Elmer's Washable Glue Sticks large size only (.77 oz.)

(The small glue sticks dry out quickly and break off easily)

4 Pocket Folders with 3 hole brackets - plain colors only,

used for homework & poetry folders

Crayola Crayons 8 pack - (not larger/smaller amounts)

1 Wide Ruled Spiral Notebook Single Subject (plain cover)

8 pack Washable Crayola Markers

1 package Clorox disinfectant wipes

First Grade & T-1

3 Boxes Crayola Crayons 24 pack - (not larger/smaller amounts)

Pencil cap erasers

1 Pair Fiskar's scissors - 5" - pointed tip

Washable markers, classic colors, wide tip (8 pack)

3 - Plain, (no pictures) plastic pocket folders

6 Elmer large size glue sticks .77 oz.

1 Bottle washable white Elmers Glue

1 Box of #2 pencils

1 Wide-ruled spiral notebook (plain cover)

Second Grade

1 Box of # 2 HB Dixon Ticonderoga soft lead pencils

4 Elmer large size glue sticks .77 oz.

1 Box Crayola Crayons 24 pack - (not larger/smaller amounts)

2 different colored Highlighters

1 Box Colored Pencils 12 pack

1 Scissors 5"

1 package Clorox disinfectant wipes (not all purpose like this year)

Boys - 1 bottle hand sanitizer 8 oz.

Girls - 1 box facial tissues

1 hand-held pencil sharpener

1 plastic pencil box

Ridgeview parents are also invited to contribute to their child's class:

1 Box of tissues - kdg & 1st

Paper cups for snacks - 1st

Napkins - 1st

Box of snacks - 1 time monthly - kdg & 1st

Gallon, pint & quart size zip-lock bags - kdg & 1st

Clorox disinfectant wipes - 1st

Anti-bacterial Hand Sanitizer - 1st & 2nd

1 Pkg. of colored computer paper - kdg & 1st

Paper plates - 1st

Paper towels - kdg & 1st





SPARTA APPLEVIEW ELEMENTARY SCHOOL

Summer Office Hours at Appleview

August 2 -August 26 Monday -Thursday 8:00 a.m. - 3:00 p.m.
(closed for lunch - noon to 1:00 p.m.)

For more information about upcoming events, visit www.spartaschools.org, click on your school, then "calendar" to see the district wide calendar.

Open House and Meet the Teacher Night

Where: Appleview Elementary

When: Wednesday, September 1, 2010

Time: 4:00 - 6:30 p.m.

Parents and students are asked to attend this event to gain important school and classroom information while having the opportunity to meet the teacher, classmates and tour our building. Please plan to join us anytime between 4:00 - 6:30 p.m. to meet your teacher and pick up important paperwork. We look forward to seeing you and your child at this special Back to School Open House.

Class Lists

Class lists will be POSTED on the entry way doors of the school on Friday, August 27, 2010.

School Hours & Conference Times

Office Hours during school.....	7:30 a.m. to 3:30 p.m.
Drop Off Time	Begins at 7:40 a.m. (please no earlier)
Daily Schedule	7:55 a.m. - 2:55 p.m.
Parent/Teacher Conferences	Thurs., Nov. 18 & Mon., Nov. 22, 2010 Thurs., Feb 10 & Tues., Feb. 15, 2011

APPLEVIEW ELEMENTARY SCHOOL SUPPLY LIST

2010-2011 School Year

Third Grade

- 3 Elmer's washable glue sticks (.21 oz)
- 1 box crayons (16 pack)
- 1 box washable markers, classic colors, wide tip (8 pack)
- 1 pair scissors, 5" pointed tip
- 12 wooden pencils (#2 Ticonderoga)
- 2 yellow highlighters
- 1 box colored pencils (12 pack)
- 12 pencil cap erasers
- 1 pencil case (3-hole, 10" x 6")
- 2 spiral notebooks, wide-ruled (1 subject size)
- 4 folders, 2-pocket (1 each of blue, red, green, yellow)
- 1 box facial tissues
- 1 canister of wipes

Fourth Grade

- 1 Elmer's washable glue stick (.77 oz)
- 1 box crayons (16 pack)
- 24 wooden pencils (#2 Ticonderoga)
- 2 yellow highlighters
- 1 box colored pencils (24 pack)
- 12 pencil cap erasers
- 6 spiral notebooks, wide-ruled (70 sheet)
- 6 folders, 2-pocket (assorted colors)
- 2 folders, 2-pocket (plastic)
- 1 felt-tip marker, non-permanent (black)
- 1 pad of yellow stick-on notes (1.5" x 2", 100-sheet)
- 1 pencil & crayon sharpener (double barrel)
- 1 composition notebook



Fifth Grade

- 12 pencil cap erasers
- 12 wooden pencils (#2 Ticonderoga)
- 1 pair scissors, 5" pointed tip
- 4 folders, 2-pocket/prong (1 each of blue, red, green, yellow)
- 1 white washable school glue (4 oz)
- 5 spiral notebooks, wide-ruled (70 sheet)
- 1 box colored pencils (12 pack)
- 2 yellow highlighters
- 2 black dry-erase markers
- 1 box washable markers, classic colors, wide tip (8 pack)
- 1 box facial tissues



SPARTA MIDDLE SCHOOL

Summer Office Hours at the Middle School

August 2 -August 26 Monday -Thursday 7:30 a.m. - 3:30 p.m.

For more information about upcoming events, visit www.spartaschools.org, click on your school, then "calendar" to see the district wide calendar.

School Hours & Important Dates

Office Hours during school.....	7:30 a.m. to 3:30 p.m.
Drop Off Time	Begins at 7:35 a.m.
Daily Schedule	7:50 a.m. - 2:50 p.m.
Picture Day	September 15, 2010
Student Led Conferences	Tues., Nov. 9 & Thurs., Nov. 11, 2010 Tues., Jan 25 & Thurs., Jan. 27, 2011

September Magazine Sale

Sparta Middle School will once again be selling magazines to help fund activities that benefit students. The sale will run from September 16 to September 23. Please save your subscriptions until then. If you are concerned that your magazine subscription will expire, feel free to go to the QSP Magazine Sale link on the middle school webpage. Here you can renew or place new orders and will be able to give a student credit for the sale. Students will receive credit for online sales only if the order is placed prior to the end of the actual sale. SMS will receive 40% of the cost. Any questions, please call Joel Stoner at 887-8211.

Open House

TUESDAY, AUGUST 31

4:30 p.m.-7:00 p.m.

Please take time to come to the middle school for your child's orientation or open house time.

Class Lists

Students will find their Advisory teacher's name and room number posted on the school doors by Friday, August 27. Schedules will not be mailed home. Students will receive their schedules on the first day of school in their Advisory classes. Teachers will take time to explain them at that time.

Meet in the Middle Meetings

Join us the 4th Monday of every month, starting Monday, September 27th
6:15 p.m. in the
Middle School Media Center.



MIDDLE SCHOOL SUPPLY LIST

2010-2011 School Year

Sixth Grade

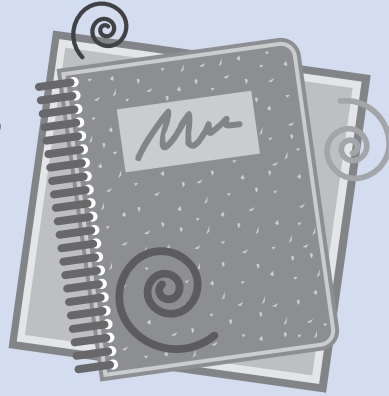
- 4 spiral notebooks (70 sheet)
- 1 set 3-ring dividers, 5-tab, colored
- 2 binders, 3-ring, 1.5"
- 12 wooden pencils (#2)
- 1 box colored pencils (12 pack)
- 12 pencil cap erasers
- 2 folders, 2-pocket (1 each of blue & red)
- 1 book cover - jumbo stretchable

Seventh Grade

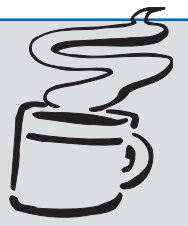
- 4 binders, 3-ring, 1.5"
- 4 sets, 3-ring dividers, 8-tab, colored
- 12 #2 wooden pencils

Eighth Grade

- 12 pencil cap erasers
- 12 wooden pencils (#2)
- 5 folders, 2-pocket/prong (assorted colors)
- 2 washable glue sticks
- 5 spiral notebooks (70 sheet)
- 1 spiral notebook, 1/4" quad (50 sheet)
- 1 box colored pencils (12 pack)
- 1 hand-held pencil sharpener
- 1 box markers, narrow tip, classic colors (8 pack)
- 1 ruler, 12", inch & cm
- 3 binders, 3-ring, 1"
- 1 set 3-ring dividers, 5-tab, colored
- 2 red ink pens
- 1 pack 1/4" graph paper



Sixth Grade Coffee Sale in September!



Buy good coffee, support a local business and help the sixth grade class go the camp. The sixth grade class is selling coffee by the pound to earn money for Sixth Grade Camp. We are offering Herman's Boy Coffee for \$9.00 per pound. The sale runs the first two week of September.

Fellows, Randee
Foland, Rory
Fox, Chandler
George, Brianna
Hamel, Katherine
Hamell, Danielle
Harbin, Haley
Harrison, Nathan
Heiss, Alek
Hill, Alyssa
Hill, Logan
Hommerson, Dakota
Hoover, Jessica
Hubert, Jacinda
Humphreys, Erica
Kaltz, Joshua
Kerkstra, MacKenzie
Klein, Cole
Klenk, Tori
Knight, Alexi
Kolenda, Johnathan
Koren, Raymond
Lavish, Trey
Lewis, Brianna
Maki, Abby
Maltman, Emily
Marble, Shelbie
Marlette, Abbie
May, Brandon
May, Kyle
McHugh, Mary
McKinney, Robert
Miller, Christopher
Momber, Amy
Moultrie, Kelsey
Nalley, Rebecca Michelle
Noorman, Jessica
Orlikowski, Cole
Orozco, Angelica
Parris, Nicholas
Platzke, Keely
Postal, Megan
Quackenbush, Colin
Rademacher, Anneliese
Rader, Tucker
Rasch, Shanna
Regeczi, Jarilyn
Richmond, Sarah
Rinal, Bailey
Ring, Nathan
Roberts, Ashley
Roberts, Matthew
Robinson, Karlee
Ronning, Bradley
Rowley, Gabriel
Saenz, Samantha
Shaw, Kolton
Shivers, Jacob
Shupe, Carter

Sixbury, Jeana
Sousa, Adam
Stearns, Alyssa
Stebbins, Cody
Tarala, Grace Li
Taylor, Andrea
Teliczan, Chloe
TerBeek, Brittney
Thoms, Lyssa
Towers, Christopher
Ungrey, Chase
VanMalsen, Meagan
VanOeffelen, Jared
VanPatten, Madison
Walker, Sabrina
Ward, Brooklyn
Ward, Taylor
Wheeler, Hannah
Wilde, Danielle
Willets, Samantha
Yeck, Nicholas

MacArthur, Connor
Maltman, Quentin
Marsman, Lillie
Mata, Lizette
Mauer, Michael
Mazurek, Madelyn
McDonald, Gavin
McMurphy, Alyssa
Miedzielec, Allison
Molina, Dezerai
Momber, Peter
Paas, Allee
Palethorpe, Mason
Pearson, Hanna
Pfeffer, Zachary
Piegols, Logan
Pope, Kenneth
Priest, Nicholas
Pugh, Jacob
Ramirez, Karen
Reyburn, Caleb
Roach, Jimmy
Roberts, Samantha
Roede, Rachel
Rogers, Ryan
Rummler, Madeline
Salerno, Valerie
Santillanes, Serina
Sargent, Katrina
Schafar, Dakota
Schuiling, Cylee
Schwallier, Brianna
Scott, Afton
Scott, Raleigh
Sellers, Jody
Shangle, Lydia
Skop, Kimberly
Slaktoski, Alexa
Soules, Evan
Soules, Hannah
Soules, Nathaniel
Sustaita, Andreina
Szost, Taylor
Tidey, Morgan
Tilli, Olivia
VanDyke, Brandon
VanKoeving, Brittney
Veldt, Michelle
Weber, Autumn
Westers, Joshua
Wiggins, Amber
Wildfong, Christopher
Willets, Frank Dylan
Wright, Alycia
Wudkewych, Megan
Yocom, Brittany
Zeep, Zoe

8th Grade

Alles, Mariah Renee
Anderson, Isaac
Beck, Ashley
Bissonette, Melissa
Bloom, Rebecca
Brown, Bradley
Brown, Zachary
Burnham, Zachary
Carroll, Colton
Chase, Nicole
Cruz, Rosemary
Curtis, Victoria
David, Emily
Dean, Melissa
Dunneback, Beau
Dupont, Robert
Dykstra, Rachel
Eischens, Stephen
Elliott, Hannah
Eluskie, Jordan
Eslick, Ethan
Feirick, Maigen
Gunhus, Riley
Harkema, Elizabeth
Heimbaugh, Mason
Hill, Abigail
Holman, Vincent
Jackson, Andrew
Kaliniak, Michaela
Kane, Isaac James
Klinge, Stefanie
Kopec, Amy
Kuipers-Berry, Kaylee
LaTour, Braden
Lenger, Brendon
Mabie, Shannon

Sparta Middle School Honor Roll 2009-10 Third Trimester

Sixth Grade

Ackerman-Smith, Cassie
Andrews, Carley
Armock, Bailey
Austin, Derek
Avellaneda, Dylan
Barscewski, Conon
Beech, Aislinn
Berdan, Jesse
Berenbrock, Skylar
Biggs, Lois
Bloom, Trevor
Boyce, Amber
Braspenninx, Troy
Brown, Jacob
Caniff, Jason
Chapman, Amber
Christafferson, Erik
Clarey-Schultz, Nokomis
Coleman, Australyah
Compton, Christopher
Cook, Madeline
Cordrey, Caitlin
Coye, Jared
Creveling, Nicholas
Dickman, Aleisha
Duran-Gomez, Julissa
Garza, Michael
Gerard, Alexis
Gunhus, Jared
Gurd, Jacob
Hall, Alexis
Hawley, Kendra
Heimbaugh, Alexis
Helms, Noah
Herrmann, Alexis
Hill, Mollie
Holland, Sydney
Holman, Quinten
Hubert, Parker
Hull, Tristan
Hume, Carley
Kane, Olivia
Kleinheksel, Devon

Knight, Bailey
Kovalenko, Victoria
Krzykwa, Kassidi
Lemke, Emma
Lenger, Delaney
Longcore, Nichole
MacLeod, Andrew
Marble, Dakota
Marsman, Alexandria
Martinek, Marie
Mason, Kailey
Mazurek, Natalie
McKinley, Alexandra
McMurphy, Meghan
Medley, Samuel
Mejia, Erika
Miedzielec, Lizzy
Miller, Whitney
Molina II, Jorge Anthony
Monterusso, Sarah
Myers, Madison
Noel, Kennedy
Olmstead, Mackenzie
Parris, Alexander
Patrick, Quinn
Pegg, Jenyfer E
Perez, Victor
Poling, Rachel
Popma, Makayla
Puga, Noe
Randle, Sydney
Razmus, Breydon
Rees, Joel
Reiter, Katherine
Richmond, Jacob
Richmond, Katelyn
Ring, Kelly
Rittersdorf, Ryan
Rozeveld, Josie
Schipper, Renn
Simons, Vanessa
Smith, Jared David
Souter, Alexander
Spedoskel, Hannah

Spetoskey, Kailey
Swanberg, Tawnie
Tasma, Tiffany
Taylor, Angela
Telfor, Tori
Thome, Andrew
Thome, Christopher
Tilli, Emily
Tuinstra, Jonathan
Turnquist, Alanna
Upton, Shelby
VanOeffelen, Taylor
Verdugo, Angela
Wahlfield, Brianna
Walkons, Savannah
Wheeler, Anna
Wildman, Whitney
Wiseman, Zachary
Young, Brandon
Zuidema, Lance

7th Grade

Anderson, Isaac
Adams, Brooke
Ameling, Michael
Anderson, Jacob
Anderson, Skylar
Averill, Jordan
Bromley, Sierrah
Brott, Rachel
Brown, Abigail
Brown, Arthur
Brown, Justin
Brown, Nicholas
Buchanan, Francesca
Burley, Kristen
Byers, Emily
Byrne, Mackenzie
Carlisle, Amber
Carlisle, Joshua
Chavez, Noelia
Clum, Deanna
Cornett, Wyatt
Dufort, James

Athletic Passes for sale!

We encourage all residents of Sparta, who have an interest in attending home athletic contests, to purchase a SEASON OR A YEAR PASS. See page back page for more information on Sparta Athletics



SPARTA HIGH SCHOOL

HS Summer Office Hours

August 2 - August 26 Mon. - Thurs. 7:30 a.m. - 3:00 p.m.
(closed for lunch - noon to 1:00 p.m.)

Marilynn Bitely will be available in the main office.
Karen Bosscher will be available for guidance.

For more information about upcoming events, visit www.spartaschools.org, click on your school, then "calendar" to see the district wide calendar.

High School Hours

Students may enter the building at 7:30 a.m.
School hours are 8:05 a.m. - 3:00 p.m.

Important HS Dates

- August 24 Pictures, schedules & registration:
9:00-11:00 a.m. - 12th grade
1:00 p.m.-3:00 p.m. - 11th & 12th grade
5:00-7:00 p.m. - 10th, 11th, 12th grade
- August 27 First Football Game vs. Kenowa Hills
- August 31 Freshman Orientation - students & parents
7:00 p.m. (more info to be mailed)
- August 31 Open House - 6:00-8:30 p.m.
- September 6 Labor Day, No School
- September 7 First Day of School
- September 16 Academic Awards Assembly - 10:30 a.m.
- September 24 Parent Coffee, Principal's office - 8:15 a.m.
- September 24 5th Quarter, HS after Football Game
- October 1 Homecoming vs. West Catholic
- October 18 Parent/Teacher Conferences - 5:00-7:30 p.m.
- May 24 Senior Awards - 7:30 p.m.
- June 2 Graduation at SHS - 7:30 p.m.

5th Quarters

5th Quarters are intended to provide a safe and fun environment for high school students to socialize after certain home football games. During 5th Quarters, Sparta High School is open from 9:15 pm-11:00 pm. Students are able to choose from the following activities: open gym, open weight room, gaming systems, cards, board games, access to technology and movies. Transportation from the football field to the high school is available. Parents please pick your students up promptly at 11:00 pm. 5th Quarter dates for the fall of 2010 include September 24 and October 22.

Parent interested in volunteering, please call the high school at 887-8213, ext. 5.

High School Supply List

2010-2011 School Year

- Flash drive (2 GB or larger)
- 4, 3-ring binders (1 1/2" or 2")
- 4 packs of 5-8 tab dividers
- 2 packs of college-ruled notebook paper (*per semester*)
- 4 spiral notebooks (*per semester*)
- Pencil pouch
- Pack of #2 pencils
- Pack of black or blue pens
- Pack of highlighters
- Colored pencils
- 2 glue sticks
- Dictionary and Thesaurus
- Graphing calculator (TI-83 or TI-84)
- Sparta High School Academic Daily Planner
(*provided when students pick up their schedules in late August*)

Sparta High School Schedules and Registration

All students must come to registration on August 24 to get their student picture identification taken. Student identification cards will be use for classroom text books, library books, and lunch account information. Returning students please bring your 2009-10 ID card with you to registration; you will use this until the new ones come in. Registration and pictures begin at the following times:

SENIORS, 9:00-11:00 a.m.

JUNIORS AND SENIORS, 1:00 p.m.-3:00 p.m.

SOPHOMORES, JUNIORS AND SENIORS, 5:00-7:00 p.m.

Parking permits for the 2010-11 school year will also be available for purchase on a first come, first serve basis.

Freshmen Orientation

Freshmen Orientation for all students in the "Class of 2014" is scheduled for Tuesday, August 31 at 6:00 p.m. Freshmen Orientation is an opportunity for students and parents to become acquainted with the programs and activities at Sparta High School. Students will receive their schedules, have their pictures taken and walk through their daily schedule. More information will be mailed.

Parents of freshmen students are invited to a parent orientation on the evening of Tuesday, August 31, starting at 7:00 p.m.

High School Theatre News

Auditions for the **High School Fall** play will be held on Tuesday, September 14 and Thursday, September 16 at 6:00. Watch for further details on our Theatre website. **Spartan Idol** will take place in October this year — more details will be posted on the High School Theatre website. The annual Stratford trip will take place in October. If interested, please email Ms. Marolf so we have an estimate of possible attendees.

Senior Class of 2011

Congratulations on your arrival to your senior year of high school! The yearbook staff set aside several pages specifically designed for seniors and we will need your help to complete these pages. Please contact Kim VanDusen at kimberly.vandusen@staff.spartaschools.org with any questions you might have.

- Please turn in a 2 x 3 vertical shoulders-up shot by Friday, December 17, 2010. (*digital images welcome*)
- Please turn in a baby photo with \$10 by Friday, December 17, 2010. (*optional*)

***The yearbook staff reserves the right to refuse inappropriate images that violate the student handbook.*

Guidelines for Senior Pictures Because contemporary clothing styles and poses change so quickly, Jostens recommends a traditional senior photo pose for placement in the yearbook. General guidelines for a traditional senior photo include: vertical format; indoor lighting with minimal background; head and shoulder position; no name or date printed on the photo. Most of the local photography studios facilitate this type of pose. Please have the photography studio send a copy directly to the high school upon request. Senior photos should be submitted to Mrs. Van Dusen.

Senior Bash News

Planning for the senior class of 2011 all-night after graduation party (BASH) has begun! We are looking for parents to help with fundraising, planning, promotion, communication and as chaperones. We need YOUR HELP now to help make this a fun, safe event for our graduates. Please call Patty Anderson at 887-2399, Amy Burmeister at 887-8669 or Barb Taylor at 887-2515 to learn how you can help.

SPARTAN FOOTBALL VIP PARKING

The Sparta Class of 2011 BASH committee will again offer VIP PARKING for all home football games at JUST \$5 per vehicle. This lot is located close to the game—on the NW end of Spartan Field—immediately north of the press box. First come, first served for this preferred parking!

SKYBOX SUITE OPPORTUNITY

Spartan football has never looked better than from the SKYBOX SUITE! The skybox (located up in the south end of the press box) features comfortable seating for 4-5 persons and the best view in the stadium. Available for all home games, one may bid on the Skybox by calling Amy at 887-8669. Bids begin at \$100. The winning bid will receive: free game admission, VIP parking, refreshments, recognition during the game and the best seats in the stadium! The Skybox Suite is sponsored by the senior class BASH committee. Don't miss this fun opportunity—call and place your bid now!



ENGLISHVILLE HIGH SCHOOL

Englishville Is Now Accepting Applications

Englishville is now accepting applications for the upcoming school year. As Sparta's alternative high school, Englishville provides a personalized setting for teens who prefer a smaller, more individualized learning environment. Both Sparta High School and Englishville High School provide students with a quality academic experience. Yet the schools are purposely quite different from each other.

Englishville is small. It offers an alternative approach, one which is structured but personal in nature. For many students, this more personalized approach is a big help when it comes to achieving success in school. Englishville is a "full service" high school. Transportation, school lunch, personal and academic counseling, and school nurse services are all available at Englishville. Qualified students are eligible to participate in driver's education and the district's sports program. Placement at the Kent Career/Technical Center can also be arranged for qualified students. Englishville is a small high school which is designed for students who desire a more personalized approach to schooling. It is not right for everyone, but it may be right for you or your teen.

The school year begins Tuesday, September 7th. If you would like more information or wish to apply for enrollment at Englishville, please call Matt Spencer at 887-7316. He will be happy to assist you.

Open House

Wednesday, September 14, 2010
3:30 - 6:30 p.m.

Englishville School Hours

Students may enter the building at 7:45 a.m.
School hours are 8:00 a.m. - 2:55 p.m.

TRANSPORTATION GUIDELINES

Our goal is to transport students in a safe, orderly, timely, and professional manner. State laws and school policies help us to achieve this goal. The following procedures are guidelines the Transportation Department abides by:

1. Children may be picked up and/or dropped off at a sitter. Parents using a sitter must provide us with the sitter's name, address and phone number as well as a schedule. Your child may ride a different bus depending on where the sitter lives.
2. We are not able to honor requests for temporary transportation changes such as students going to a friend's house for one or more days. The only exception to this is if both students are on the same route or if a true emergency exists. There is only one pick-up and one drop-off location allowed per student.
3. Parents should have prearranged alternate drop-off points, if necessary, for their children in case of early dismissal due to inclement weather or other emergencies. These locations must be provided to the Transportation Office at the start of each school year.
4. Transportation personnel will not drop off kindergarten students unless an adult is present to accept responsibility for that child. Parents who are not able to meet this responsibility must make other arrangements with the Transportation Office. A written agreement will be required.
5. Parents who have changed sitters or residences must call the Transportation Office with this information. Otherwise, last year's information will be used.
6. Pick-up and drop-off locations should be reported to Transportation as soon as parents make these arrangements. Route maps are finalized one week prior to the start of school. Requests for changes after this time may not be guaranteed (see #5 above).
7. The morning transfer site is located behind the Middle School. The afternoon transfer site is in the Ridgeview bus lot. Only buses are allowed in these lots during transfer times.
8. Parents are reminded that morning Kindergarten, Smart Start, and Day Care students may change buses at the morning transfer site.

If you have any questions concerning these procedures, please call the Transportation Office at 887-0136 between 6:00 a.m. and 5:00 p.m.

BUS ROUTES

In-town Bus Shuttle Stops

Second grade through twelfth grade students NORTH of 13-Mile WITHIN THE VILLAGE LIMITS will be picked up at the following shuttle stops:

- Elmwood & Terrace (bus #118)
- Alma between N. State & Grove (bus #130)
- Carrie between Union & N. Elm (bus #133)
- Grove between Loomis & Cherry (bus #131 & bus #136)

Second through fifth grade students SOUTH of 13 Mile WITHIN THE VILLAGE LIMITS will be picked up at the following shuttle stops:

- Ida Red at apartments (bus #134)
- Anderson & South (bus #118)
- Orchard & Anderson (bus #134)
- Lamoreaux Park (southeast corner of park) (bus #118)
- Pearl between Vine & S. Union (bus #140)
- Washington & Centennial (southwest corner) (bus #140)
- E. Gardner at Washington (at skate park) (bus #140)
- Martindale & E. Gardner (northwest corner) (bus #122)
- Atkinson & Blake (bus #122)
- Martindale & Fairlane (bus #122)
- Edward between 12 Mile & Clark (bus #122)
- Clark between Edward & S. Union (bus #122)
- S. Union between Clark & 12 Mile (bus #122)



PLEASE HAVE STUDENTS WAITING AT SHUTTLE STOPS BY 7:25 AM

- HS and MS students living SOUTH OF 13-MILE; will continue to walk to/from school.
- In-town Kindergartners and younger will be picked up at home if possible. First graders may walk to nearest established Kindergarten stop to ride bus to Ridgeview.

Bus Routes Continued on Page 10

Student Conduct Discipline on Buses

One of the goals of the Transportation Department is to provide safe travel for students. In order to accomplish this, students are expected to follow some basic rules. These rules are probably not much different than parents would expect in their family vehicle: behave yourself, do as you are asked, and mind your manners. Similar rules (below) are published on easy to read posters on each bus:

"KEEP YOUR RIDING PRIVILEGES"

Cooperate with your Driver by being:

SAFE, ORDERLY, and CARING.

BE SAFE:

Stay seated, keep head, hands and feet inside the bus.

BE ORDERLY:

No eating, drinking, smoking, profanity or vandalism.

BE CARING:

Cooperate with the driver, no littering.

YOUR BUS DRIVER IS IN CHARGE

Bus drivers are responsible for enforcing bus rules. They have the authority to manage student behavior on buses. When students choose to misbehave, the bus driver must respond in order to guarantee the safety of all students. Generally speaking, the concept of progressive discipline is followed. The following steps are followed in managing behavior on the bus:

1. **First Offense:** Prior to this point, the bus driver has been asking the student to follow the bus rules and will have spoken with parents about behavior problems. The driver may have already disciplined the child using a variety of consequences that include assigning a seat, having a student write sentences, etc. A Bus Conduct Report (BCR) is filed, copies are sent to parents and the appropriate school. Parents are asked to sign BCR and have student return it to the driver to ensure bus riding privileges continue.
2. **Second Offense:** When a student continues to choose to disobey the rules for safe bus travel, a second BCR is filed. More severe consequences are used in an attempt to correct behavior. A transportation supervisor may contact parents.
3. **Third Offense:** The transportation supervisor and the principal continue to work with the student and parents to try and develop a plan for improving the student's behavior on the bus. An in-school or out-of-school suspension may be considered. Another BCR is filed.
4. **Fourth Offense Report:** A BCR is again sent to the parents and building principal. The transportation supervisor and principal develop another discipline plan for the student. This may include an in-school or out-of-school suspension and/or bus riding privilege suspension and/or a meeting with parents. Suspension of bus riding privileges means that parents are responsible for transporting the student for the length of the bus riding privilege suspension.
5. **Subsequent BCRs:** At this point, all attempts to change student behavior have failed. Bus riding privileges may be withdrawn, parents and student may be required to meet with the transportation supervisor to have this privilege reinstated.

The severity of an offense will determine at which step the discipline will start. Serious violations, such as fighting, possession of weapons or tobacco products or alcohol may mean that the discipline will start at a level other than the first level. Each case of student misbehavior requiring disciplinary action will be handled on an individual basis.

BUS ROUTES – continued

BUS 138:

AM KDG-1ST GRADE IN-TOWN PICKUP ONLY Young 5, Kindergarten & First Grade IN-TOWN STUDENTS attending Ridgeview WILL RIDE THIS BUS!

Bus leaves garage at 6:50AM

- (6:52) EAST on Nash (from State)
- (6:53) SOUTH on Pleasant, WEST on South
- (6:54) SOUTH on White, EAST on Amelia, NORTH on Pine
- (6:56) EAST on South, SOUTH on State
- (6:58) WEST on W. Gardner, SOUTH on Pine
- (7:00) WEST on Orchard
- (7:01) NORTH on Anderson
- (7:04) WEST on W. Division, turn around to go EAST, then NORTH on State
- (7:09) WEST on Terrace, onto Harper, return to Terrace, NORTH on State
- (7:13) EAST on Alma, NORTH on N. Elm
- (7:15) WEST on Carrie, NORTH on State, EAST on E. Mark
- (7:17) SOUTH on Union, EAST on Alma, SOUTH on N. Elm
- (7:19) EAST on Grove, cross RR tracks
- (7:20) SOUTH on Cherry, WEST on Gunn, SOUTH on Loomis
- (7:22) WEST on Division, SOUTH on State
- (7:24) EAST on Centennial
- (7:25) NORTH on Union, EAST on Division
- (7:27) SOUTH on Washington, EAST on Gardner
- (7:29) NORTH on Maple, EAST on Hickory
- (7:31) SOUTH on S. Elm, EAST on Gardner
- (7:32) NORTH on Martindale
- (7:33) WEST on Knob, NORTH on Prospect, right on Hickory around curve onto Martindale
- (7:35) EAST on Atkinson, turn around at end of cul-de-sac
- (7:37) SOUTH on Blake, WEST on Tentree, SOUTH on Martindale, WEST on 12 Mile
- (7:40) NORTH on Edward, WEST on Clark, SOUTH on S. Union
- (7:44) WEST on 12-Mile to Ridgeview

BUS 111:

- (6:47) EAST on Hull (north/south sides ride)
 - STUDENTS LIVING ON REYBURN WILL WALK TO CORNER OF REYBURN & HULL
 - (6:53) SOUTH on Lymburner (east/west sides ride)
 - (6:59) WEST on Broman (north/south sides ride; students living on Tebeau will walk to corner of Tebeau & Broman)
 - (7:02) NORTH on Division (from Moose Lodge) (east/west side rides)
 - (7:12) WEST on 15 Mile, NORTH on Long Lake, turn around at Indian Lakes to pick up at
 - (7:15) Riverview trailer park (ELEMENTARY STUDENTS ONLY RIDE THIS BUS)
 - (7:25) Glenwood Estates trailer park (ELEMENTARY STUDENTS WITH LAST NAMES STARTING WITH A THRU L WILL RIDE THIS BUS)
- To transfer site by 7:35

BUS 112:

- (6:55) SOUTH on Old Alpine (from 13 Mile) (east/west sides ride) to 12-Mile
 - (7:04) WEST on Cosby Way, turn around at end of cul-de-sac
 - (7:06) SOUTH on Old Alpine (west side rides) turn around at Whispering Pines
 - (7:10) NORTH on Old Alpine (east side rides)
 - (7:12) EAST on Schultz (south side rides) turn around at 2nd drive of Schultz Trailer Park
 - (7:18) WEST on Schultz (north side rides)
 - (7:19) NORTH on Old Alpine (east side rides)
 - (7:21) WEST on 12-Mile (north side rides) to Martindale
 - (7:25) Glenwood Estates trailer park (HIGH SCHOOL STUDENTS WILL RIDE THIS BUS)
- To transfer site by 7:35

BUS 113: 1st, 2nd, 3rd SESSION (KCTC) SKILLS BUS

- 1ST : Arrives at HS front entrance by 6:15 am, leaves for KCTC by 6:19 am.
- 2ND: Arrives at HS front entrance by 8:44 am, leaves for KCTC by 8:45 am.
- 3RD: Arrives at HS front entrance by 11:24 am, leaves for KCTC by 11:28 am.

BUS 118:

- (6:57) EAST on 10-Mile (from Old Alpine) (south sides rides)
 - (6:59) NORTH on Vinton, turn around at airport
 - (7:03) SOUTH on Vinton (CROSS 10 MILE) to 8-Mile (west side rides)
 - (7:07) turn around at 8-Mile – NORTH on Vinton (east side rides)
 - (7:11) EAST on 10-Mile (south side rides)
 - (7:14) SOUTH on Division (east/west sides ride)
 - (7:17) WEST on 9-Mile to M-37
- SHUTTLE STOPS:** Lamoreaux Park, Anderson & South St., Elmwood & Terrace
- To transfer site by 7:35

BUS 121:

- (6:47) EAST on 10-Mile (from M-37) (south side rides)
 - (6:51) NORTH on Old Alpine (east side rides; last stop across from Whispering Pines) turn around at Schultz Rd (6:56)
 - (6:56) SOUTH on Old Alpine (west side rides starting south of Whispering Pines)
 - (6:58) WEST on S. Sunset Pines (north/south sides ride)
 - NORTH on W. Sunset Pines (east/west sides ride)
 - (7:03) EAST on N. Sunset Pines (north/south sides ride)
 - (7:04) SOUTH on Old Alpine (west side rides to 9-Mile; both sides ride from 9-Mile to M-37)
 - (7:06) CROSS 10-Mile
 - (7:10) NORTH on M-37 (no pick-ups)
 - (7:11) EAST on 9-Mile (north/south sides ride)
 - (7:14) NORTH on Old Alpine (east side rides)
 - (7:19) WEST on 10-Mile (north side rides)
 - NORTH on M-37 (no pick ups)
- To transfer site by 7:35

BUS 122:

- (6:39) NORTH on Pine Island (from 13-Mile) (east side rides)
 - (6:49) Turn around at Lime Lake
 - (6:51) SOUTH on Pine Island (west side rides)
 - (6:53) WEST on Tibalew, turn around at end of cul-de-sac
 - (6:55) SOUTH on Pine Island
 - (7:00) WEST on Hull (north, south sides ride)
 - SOUTH on Lymburner (no pick ups on this bus)
 - (7:06) EAST on 14-Mile (north/south sides ride)
 - (7:07) SOUTH on Pine Island (to 13-Mile) (west side rides)
- SHUTTLE STOPS:** (7:15) Martindale & E. Gardner, (7:16) Atkinson & Blake, (7:17) Maizie Lane & Atkinson, (7:20) Tentree & Martindale (7:21) Fairlane & Martindale, (7:25) middle of block on Edward, (7:26) middle of block on Clark, (7:27) middle of block on S. Union
- WEST on 12-Mile
- To transfer site by 7:35

BUS 123:

(temporary bus run until 11/1/2010)

- (6:57) WEST on 10-Mile from M-37
 - (7:15) Turn around at DIETRICH FARM (1311 Wilson) to go EAST on Wilson
 - (7:16) SOUTH on 8th Ave. (west side rides)
 - (7:17) NORTH on 8th Ave. (east side rides)
 - (7:18) EAST on Wilson
 - (7:21) CROSS Fruit Ridge
- To transfer site by 7:35

BUS #128: (LIFT BUS)

ALL WHEELCHAIR STUDENTS RIDE THIS BUS

- (6:51) WEST on Tibalew (Swathmore Est.)
 - (7:10) WEST on Fonger (ALL STUDENTS BETWEEN PINE ISLAND & NESTOR RIDE THIS BUS)
- To transfer site by 7:35

BUS #129:

- (6:43) NORTH on Long Lake Dr. (east side rides), turn around at Indian Lakes
 - (6:51) SOUTH on Long Lake Dr. (west side rides including MS/HS students at Riverview Trailer Park)
 - (6:58) EAST on 15-Mile (north/south sides ride)
 - (7:03) SOUTH on Division (west side rides)
 - (7:07) WEST on 14-Mile (no pick ups)
 - NORTH on Long Lake; turn around at 15 Mile to go
 - (7:13) SOUTH on Long Lake (west side rides)
 - STUDENTS LIVING IN OLDE SCHOOL FOREST WILL WALK TO ENTRANCE OF DEVELOPMENT
- SHUTTLE STOP:** (7:25) Grove St. & Cherry
- To transfer site by 7:35

BUS 130:

- (6:27) WEST on 13-Mile/Gooding (from M-37) (north side rides)
- (6:30) NORTH on 24th Ave/VanDyke (east side rides) turn around, SOUTH on 24th Ave/VanDyke
- (6:35) EAST on Gooding/13-Mile (south side rides)
- (6:38) NORTH on 16th Ave (east/west side rides)
- (6:40) WEST on Hoover (north side rides) Students living (N) of Hoover on 24th & on Hoover (W) of 24th come to corner

BUS NUMBERS AND ROUTES ARE SUBJECT TO CHANGE

BUS ROUTES – continued

(6:42) SOUTH on 24th (west side ride)
ALL STUDENTS ON/OFF AT MELBE & 24TH
(6:45) NORTH ON 24th (east side ride)
(6:46) EAST on Hoover (south side rides)
CROSS 16th Ave

(6:49) SOUTH on 8th Ave (east/west sides ride)
(6:51) EAST on Gooding (no pick ups on this bus)
(6:54) NORTH on Kenowa (east side rides);
EAST on 14-Mile

(7:03) SOUTH on Fruit Ridge
(7:05) EAST on Gooding (south side rides)
(7:10) NORTH on Phelps (east/west sides ride)

(7:16) EAST on O'Connor to Sparta Ave
(north/south sides ride)

(7:19) SOUTH on Sparta Ave

SHUTTLE STOPS: (7:22) Alma between Sparta Ave & Union, (7:27) W. Division between Chary Lane & Ecklund

To transfer site by 7:35

BUS 131:

(6:40) NORTH on Stebbins (east/west sides ride)
(6:54) EAST on Indian Lakes (north/south sides ride)

(6:57) NORTH on Paine (east/west sides ride)
(7:00) WEST on 16-Mile (north/south sides ride)
(7:08) SOUTH on Sparta Ave (east/west sides ride)

(7:12) SOUTH on Sparta Ave from Ball Creek
(no pickups)

(7:25) Glenwood Estates trailer park (MIDDLE
SCHOOL STUDENTS WILL RIDE THIS BUS)

To transfer site by 7:35

BUS 132:

(6:30) Students living on Phelps north of 15-Mile
walk to corner & ride this bus

(6:32) SOUTH on Phelps (east/west sides ride)
(6:35) WEST on 14-Mile (north/south sides ride)

(6:41) NORTH on Fruit Ridge (east side rides)
(6:45) WEST on 16-Mile (north/south sides ride)

(6:49) SOUTH on Kenowa (east/west sides ride)
(6:52) EAST on 15-Mile (north/south sides ride)

(6:55) SOUTH on Fruit Ridge (west side rides)
(6:56) WEST on Lutheran Church Rd
(north/south sides ride)

(7:02) SOUTH on Kenowa (east/west sides ride)
(7:04) WEST on Hoover (north side sides ride
between Kenowa & 8th Ave.)

(7:07) NORTH on 8th Ave.
(7:09) WEST on Truman/15 Mile (both sides ride)

(7:11) SOUTH on 16th (east/west sides ride)
(7:13) EAST on Hoover, NORTH on Kenowa

(7:17) EAST on 15-Mile
(7:18) CROSS Fruit Ridge (both sides ride)

(7:21) CROSS M-37 (both sides ride)
(7:24) SOUTH on Sparta Ave. (east/west sides ride)

To transfer site by 7:35

BUS 133:

(6:27) SOUTH on Fruit Ridge (from 13-Mile) (west
side rides)

(6:30) WEST on 10-Mile (no pickups)
(6:31) NORTH on Kenowa (east/west sides ride)

(6:39) WEST on Coolidge (north/south sides ride)
(6:42) SOUTH on 16th Ave (east/west sides ride)

(6:44) WEST on Harding (north/south sides ride) turn
around just west of 16th Ave to go

(6:48) EAST on Harding (north/south sides ride)

(6:51) SOUTH on Kenowa (east/west sides ride)

(6:54) EAST on Wilson (no pick ups)

(6:57) NORTH on Fruit Ridge to 12-Mile
(east side rides)

(7:03) EAST on 12-Mile

(7:07) SOUTH on Laubach (east/west sides ride)

(7:10) WEST on 11-Mile (no pickups)

(7:12) NORTH on Peach Ridge (east side rides)

(7:17) EAST on 12-Mile (north/south sides
ride to M-37)

SHUTTLE STOPS: on Alma between State & Union,
on Carrie between Union & N. Elm

To transfer site by 7:35

BUS NUMBERS AND ROUTES ARE SUBJECT TO CHANGE

BUS 134:

(6:34) SOUTH on Sparta Ave (between
12-Mile & M-37) (west side rides)

(6:38) SOUTH on Baumhoff (from 10-Mile)
(east/west sides ride)

(6:42) EAST on 9-Mile (north/south sides ride)
SOUTH on M-37 (no pickups)

(6:47) WEST on 8-Mile (north/south sides ride)
STUDENTS LIVING OUT OF DISTRICT COME
TO 8-MILE & FRUIT RIDGE TO RIDE THIS BUS

(6:56) NORTH on Stage/Kenowa (east/west sides ride)

(6:58) EAST on Wilson (no pickups)

(7:01) SOUTH on Fruit Ridge (west side rides)

(7:11) EAST on 9-Mile (north/south sides ride)

(7:18) NORTH on Sparta Ave to 10-Mile
(east/west side rides)

SHUTTLE STOPS: Ida Red across from retirement
home, Orchard & Anderson

To transfer site by 7:35

BUS 135:

(6:35) EAST on Rector (from Pine Island)
(north/south sides ride)

(6:40) NORTH on Grange – EAST on
13-Mile – SOUTH on Algoma

(6:44) WEST on Rector

(6:48) SOUTH on Grange (west side rides)

(6:49) EAST on 12-Mile (north/south sides ride)

(6:51) SOUTH on Algoma (east/west sides ride)

(6:52) WEST on Fonger (north/south sides ride)

(6:53) SOUTH on Grange (east/west sides ride)

(6:54) WEST on 11-Mile (north/south sides ride)
NORTH on Pine Island (no pick ups)

(6:57) EAST on Fonger (north/south sides ride)

(7:04) NORTH on Grange (east/west sides ride)

(7:11) CROSS 13-Mile

(7:14) EAST on 14-Mile (north/south sides ride)

(7:18) SOUTH on Algoma (east/west sides ride)

(7:21) EAST on Red Rose Lane, turn around at
end of cul-de-sac

(7:24) SOUTH on Algoma (west side rides)

(7:28) WEST on 13-Mile (no pick ups on this bus)

To transfer site by 7:35

BUS 136:

(6:50) EAST on Indian Lakes (from Long Lake)
(north/south sides ride)

(6:58) CROSS Pine Island

(7:02) SOUTH on Pennington

(7:05) WEST on Hull (north/south sides ride)

(7:10) SOUTH on Pine Island (no pickups)

(7:11) WEST on 13-Mile (north side rides between
Pine Island and Division)

(7:17) NORTH on Division (east/west sides ride)

(7:20) WEST on 14-Mile (north/south sides ride)

(7:23) SOUTH on Long Lake, WEST on 13-Mile (no
pick ups on this bus)

SHUTTLE STOP: (7:27) Grove St. & Loomis

BUS 137:

(6:36) SOUTH on Sparta Ave (from M-37)
(east/west sides ride)

(6:39) WEST on 10-Mile (no pickups)

(6:45) SOUTH on Fruit Ridge, EAST on 9-Mile

(6:50) NORTH on Peach Ridge (east/west sides ride)

CROSS 10-Mile

(6:56) EAST on 11-Mile (north/south sides ride)

(7:00) NORTH on Laubach - EAST on 12-Mile –
SOUTH on M-37

(7:03) SOUTH on Baumhoff (east/west sides ride)

(7:12) EAST on 10-Mile

(7:16) SOUTH on M-37, Michigan turn to go
NORTH on M-37, EAST on 10-Mile

(7:18) NORTH on Ingram – pick up at corners of
South Hill & Ingram; turn around at end of
cul-de-sac to go SOUTH on Ingram

(7:22) WEST on 10-Mile - NORTH on Sparta Ave

(7:23) WEST on 11-Mile, turn around at end
of cul-de-sac

NORTH on Sparta Ave - WEST on 12-Mile

(7:26) SOUTH on Baumhoff, turn around at
end of cul-de-sac

EAST on 12-Mile (south side rides)

To transfer site by 7:35

BUS 139:

(6:47) EAST on Marway (from M-37)
(one stop in middle of block)

(6:49) NORTH on Wahlfield (one stop in
middle of block)

(6:51) WEST on Vogelane (one stop at
Lonnee Ct. for all students)

(6:52) NORTH on M-37 (no pick ups)

(6:53) EAST on 8-Mile (north/south sides ride)

(6:58) SOUTH on Vinton (east/west sides ride)

(7:01) EAST on Hayes (north/south sides ride)

(7:03) NORTH on Division (east/west sides ride)

(7:05) CROSS 10-Mile

(7:10) WEST on Tabby Dr (pickup at corner of
Tabby & Parkerwood Dr)

NORTH on Parkerwood Dr around curve to
N. Division

(7:15) NORTH on N. Division (east/west sides ride)

(7:16) WEST on 11-Mile (north/south sides ride)

(7:17) SOUTH on Vinton, (east/west sides ride) turn
around at end of cul-de-sac to go NORTH on Vinton

(7:20) WEST on Schultz (north side rides to
Minnie's Way)

(7:25) Glenwood Estates (ELEMENTARY
STUDENTS WITH NAMES BEGINNING
WITH M THRU Z WILL RIDE THIS BUS)

To transfer site by 7:35

Bus Routes continued on page 12

Coming in August from the Sparta Education Foundation



The Sparta Education Foundation will be selling a 2010-2011 school and community calendar to help raise funds for the “extras for education”. The full color calendar showcases student artwork and classroom pictures, plus important school and community dates. The calendars will be offered for \$10.00 each. Sales will start in August at the community farm market, school open houses, school buildings and at the village office.

You won't want to miss out!

BUS ROUTES – continued

Bus Routes continued from page 11

BUS 140:

- (6:52) SOUTH on Division (from 13-Mile) (west side rides)
- (6:57) EAST on Fonger (south side rides)
- (7:00) SOUTH on Lake Gerald (all students on side streets walk to corner of street & Lake Gerald)
- (7:05) SOUTH on Nestor, NORTH on Pine Island
- (7:08) WEST on 11-Mile (north/south sides ride)
- (7:11) NORTH on Nestor (east/west sides ride)
- (7:12) WEST on Fonger (north side rides)
- (7:20) NORTH on Division (no pickups)

SHUTTLE STOPS: Washington St. between E. Division & Centennial; corner S. Union & Pearl; skate park on E. Gardner; Washington between E. Gardner & Pearl; Centennial between S. Union & State St.

To transfer site by 7:35

BUS 141:

- (6:41) WEST on 13-Mile from old Alpine (south side rides)
- (6:59) SOUTH on Pine Island (from 13-Mile) (west side rides)
- (7:03) WEST on Rector (turn around at dead end)
- EAST on Rector (make 1 stop across from Meadowgate)
- (7:05) SOUTH on Pine Island (west side rides)
- WEST on 11-Mile, SOUTH on Nestor (no pick ups on this bus)
- (7:09) NORTH on Pine Island (east side rides) to 13-Mile
- (7:12) EAST on 13-Mile (south side rides)
- (7:15) SOUTH on Algoma, turn around at township hall to go NORTH on Algoma
- (7:18) WEST on 13-Mile (north side rides, run ends at 13-Mile & Pine Island)

To transfer site by 7:35

STUDENTS WHO ATTEND TRINITY LUTHERAN GET ON THIS BUS AT MIDDLE SCHOOL TO BE TRANSPORTED TO SCHOOL

**BUS NUMBERS
AND ROUTES ARE
SUBJECT TO CHANGE**



**Please watch for
information to come from
your school about school bus
orientation**

FOOD SERVICE INFORMATION & APPLICATION

Dear Parent/Guardian:

Children need healthy meals to learn. Sparta Area Schools offers healthy meals every school day. Students may buy lunch for \$1.85 to \$2.10 and breakfast for \$1.25 to \$1.30. Your children may qualify for free meals or for reduced price meals. We sell reduced price lunches for \$.40 and breakfasts for \$.30. If a doctor has determined that your child has a disability, and the disability would prevent the child from eating the regular school meal, the school will make any substitution prescribed by a licensed physician at no extra charge. The physician's statement, including prescribed diet and/or substitution, must be submitted to the food service department at your school. For further information, please call, **Tim Kleaveland 475 W. Spartan Dr., Sparta, MI 49345 616-887-1744.**

1. **Do I need to fill out an application for each child?** No. Complete the application to apply for free and reduced price school meals. Use one Free and Reduced Price School Meals Family Application for all students in your household. We cannot approve an application that is not complete, so be sure to fill out all required information. Return the completed application to:
Tim Kleaveland 475 W. Spartan Dr., Sparta, MI 49345 616-887-1744.
2. **Who can receive free meals?** Children in households getting Food Assistance Program (FAP), Family Independence Program (FIP), or Food Distribution Program on Indian Reservations (FDPIR) and most foster children can get free meals regardless of your income. Also, your children can get free meals if your household income is within the free limits on the Federal Income Guidelines.
3. **Can homeless, runaway, and migrant children receive free meals?** Please call **Matt Spencer, 887-8213** or **Marialyce Zeerip, 887-7321**, homeless liaison or migrant coordinator to see if your child(ren) qualify if you have not been informed that they will get free meals.
4. **Who can receive reduced price meals?** Your children can get low cost meals if your household income is within the reduced price limits on the Federal Income Guidelines Chart.
5. **Should I fill out an application if I got a letter this school year saying my children are approved for free or reduced price meals?** Please read the letter you got carefully and follow any instructions if provided. Call the school at 887-1744 if you have questions.
6. **My child's application was approved last year. Do I need to fill out another one?** Yes. Your child's application is only good for that school year and for the first few days of this school year. You must send in a new application unless the school told you that your child is eligible for the new school year.
7. **I receive WIC. Can my child(ren) receive free meals?** Children in households participating in WIC may be eligible for free or reduced price meals. An application must be filled out by WIC households.

8. **Will the information I give be checked?** Yes, we may ask you to send written proof of any information provided on the application.
9. **If I don't qualify now, may I apply later?** Yes. You may apply at any time during the school year if your house-hold size goes up, income goes down, or if you start getting FAP, FIP, FDPIR, or other benefits. If you lose your job, your children may be able to get free or reduced price meals.
10. **What if I disagree with the school's decision about my application?** You should talk to school officials. You also may ask for a hearing by calling or writing to:
Mark Kasmer, 465 S. Union St, Sparta, MI 49345. 887-8253.
11. **May I apply if someone in my household is not a U.S. citizen?** Yes. You or your child(ren) do not have to be a U.S. citizen to qualify for free or reduced price meals.
12. **Who should I include as members of my household?** You must include all people living in your household, related or not (such as grandparents, other relative, or friends), including yourself and all children who live with you.
13. **What if my income is not always the same?** List the amount that you normally get. For example, if you normally get \$1000 each month, but you missed some work last month and only got \$900, put down that you get \$1000 per month. If you normally get overtime, include it, but not if you get it only sometimes.
14. **We are in the military. Do we include our housing allowance as income?** If your housing is part of the Military Housing Privatization Initiative, do not include your housing allowance as income. All other allowances must be included in your gross income.
15. **What if my child does not have health insurance?** Your children may qualify for low cost or free health insurance through MICHild and Healthy Kids Program. To apply online, go to www.michigan.gov/michild or call 1-888-988-6300 for help or to request a paper application.
16. **My spouse is deployed to a combat zone. Is her combat pay counted as income?** No, if the combat pay is received in addition to her basic pay because of her deployment and it wasn't received before she was deployed, combat pay is not counted as income. Contact your school for more information.
17. **My family needs more help. Are there other programs we might apply for?** To find out how to apply for Supplemental Nutrition Assistance Program (SNAP) or other assistance benefits, contact your local assistance office or call 1-800-481-4989.

If you have other questions or need help, call **616-887-1744.**
Si necesita ayuda, por favor llame al teléfono: **616-887-1744.**

Sincerely,
Tim Kleaveland, Food Service Director

FOOD SERVICE INFORMATION & APPLICATION

Application Instructions

1.) If you are applying for a FOSTER CHILD, follow these instructions:

- Part 1: Check the box and list the child's personal use monthly income, if any.
- Part 2: Skip this part.
- Part 3: Skip this part.
- Part 4: Use a separate application for each foster child. List the child's name, school, and grade. Do not list other household members. A foster child is considered a household of one.
- Part 5: Skip this part.
- Part 6: Sign and date the form. A social security number is not necessary.
- Part 7: Answer this question if you choose to.
- Part 8: Answer this question if you choose to.

2.) If you are applying for a homeless, migrant, or runaway child check the appropriate box and contact your Homeless Liaison or Migrant Coordinator. Fill out application by following instructions for ALL OTHER HOUSEHOLDS.

3.) If anyone in your household receives Food Assistance Program (FAP), Family Independence Program (FIP), or Food Distribution Program on Indian Reservations (FDPIR), follow these instructions:

- Part 1: Skip this part.
- Part 2: Skip this part.
- Part 3: Answer the question by circling either YES or NO. If you circle YES, you must list a case number in the space provided for the specific program.
- Part 4: Fill out with only the student's names, grades and schools in your household. Filling in non-student names is not necessary.
- Part 5: Skip this part.
- Part 6: Sign and date the form. A social security number is not necessary.

4.) ALL OTHER HOUSEHOLDS, including WIC households, follow these instructions:

- Part 1: Skip this part.
- Part 2: Check the appropriate box, if any.
- Part 3: Skip this part if it was not applicable to your household.
- Part 4: Follow these instructions to report all household members:

Column 1 - Name: List the first and last name of each person living in your household, related or not (such as grandparents, other relatives, or friends). You must include yourself and all children living with you. Be sure to include all students. Attach another sheet of paper if needed.

Column 2 - Grade: Fill in the grade of each student in your household.
Column 3 - School Name: Fill in the school name each student in your household is attending.

Part 5: Gross Income: Use this section to report all income in your household from the previous month: For all household members (including students, young children, grandparents, relatives, etc) that are not receiving any income, circle the \$0 indicating NO income for that person.

- Next to each person's first and last name list each type of income received last month. *Next to the amount circle how often the person got it (weekly, every 2 weeks, twice a month, or monthly).*
- Earnings from work: List the gross income each person earned from work. This is not the same as take-home pay. Gross income is the amount earned before taxes and other deductions. Net income should ONLY be reported for self-owned business, farm, or rental income.
- All other income: List the amount each person got last month from welfare, child support, and alimony in the next column. List the amount each person got last month from pensions, retirement, and Social Security in the respective column. List All Other Income sources in the last column. All Other Income includes Worker's Compensation, unemployment, strike benefits, Supplemental Security Income (SSI), Veteran's benefits (VA benefits), disability benefits, regular contributions from people who do not live in your household, and ANY OTHER INCOME.

Part 6: An adult household member must sign and date the form, and list a social security number or check the box "I do not have a social security number."

Part 7: Skip this part.

Part 8: Answer this question if you choose to.



Sparta Area Schools Free and Reduced Price School Meals Family Application

Part 1 - Foster Child Yes Child's spending money per month \$ _____. If none available, list \$0. Only list the foster child's name, grade and school in Part 4.
Only the foster child's spending money is counted as income on a foster child application. Complete a separate application for EACH foster child.

Part 2 - Homeless Migrant Runaway Only list the child's name, grade and school in Part 4. 887-8213
If the child you are applying for is homeless, migrant or a runaway, check the appropriate category and verify with the district/school Homeless Liaison or Migrant coordinator at 887-2085

Part 3 - Does any member of your household receive Food Assistance Program/Family Independence Program/FDPIR? YES NO (circle one)
If yes, you MUST list a case number - Food Assistance Program # _____ Family Independence Program # _____ FDPIR # _____
* Bridge Card Numbers and Medicaid Numbers are NOT ACCEPTABLE case numbers

Part 4 - Household Names - List below all people living in your household, students and non-students, related or unrelated, for example, grandparents, other relatives, and/or friends including yourself and children who live with you.			Part 5 - Total Household Gross Incomes Include the amount of money and Circle how often it is received. If you listed a Food Assistance Program/Family Independence Program/FDPIR number for a child in Part 3, skip to Part 6.											
Names (Last, First)	Grade (if applicable)	Building Name (if applicable)	Circle if NO income	Earnings from Work (before any deductions and taxes)		Welfare, Child Support, Alimony		Pensions, Retirement, Social Security		All Other Income				
				weekly	every 2 weeks	weekly	every 2 weeks	weekly	every 2 weeks	weekly	every 2 weeks	weekly	every 2 weeks	
Example: Doe, Jane			\$0	\$600	monthly			\$250	monthly					
1			\$0											
2			\$0											
3			\$0											
4			\$0											
5			\$0											
6			\$0											
7			\$0											

Part 6 - Signature and Social Security Number (Adult household member MUST sign and date.)
If Part 5 is completed, the adult signing the form must also list his or her Social Security Number or check the "I do not have a social security number box". (See Privacy Act Statement on the back of this page.)

I certify (promise) that all information on this application is true and that all income is reported. I understand that the school will get Federal Funds based on the information I give. I understand that school officials may verify (check) the information. I understand that if I purposely give false information, my child may lose benefits and I may be prosecuted.

Sign Here: X _____ Print Name: _____ Date: _____

Adult Social Security Number: _____ I do not have a Social Security Number

Address	City	Zip Code	County
Home/Cell Phone	Work Phone	Email Address	

By providing your email address you may be notified via e-mail of your eligibility for free and reduced price school meals.

form continued on next page

FOOD SERVICE INFORMATION & APPLICATION



Sharing Information with other Programs

To save you time and effort, the information you gave on your Free and Reduced Price School Meals Family Application may be shared with other programs for which your children may qualify. **For the following programs, we must have your permission to share your information. Sending in this form will not change whether your children get free or reduced price meals.**

- NO!** I DO NOT want information from my Free and Reduced Price School Meals Application shared with any of these programs. If you checked no, stop here. You do not have to complete or send in this form. Your information will not be shared.
- YES!** I DO want school officials to share information from my Free and Reduced Price School Meals Application with ATHLETIC PARTICIPATION FEE.
- YES!** I DO want school officials to share information from my Free and Reduced Price School Meals Application with _____
(Name of program specific to your school)
- YES!** I DO want school officials to share information from my Free and Reduced Price School Meals Application with _____
(Name of program specific to your school)

If you check yes to any or all of the boxes above, fill out the form below. Your information will be shared only with the programs you checked.

Child's Name: _____ School: _____
 Child's Name: _____ School: _____
 Child's Name: _____ School: _____
 Child's Name: _____ School: _____
 Signature of Parent/Guardian: _____ Date: _____
 Printed Name: _____
 Address: _____

For more information, you may call 887-1744.

Return this form to: Tim Kleaveland, Food Service Director, 475 W. Spartan Drive, Sparta, MI 49345

Privacy Act Statement: This explains how we will use the information you give us.

The Richard B. Russell National School Lunch Act requires the information on this application. You do not have to give the information, but if you do not, we cannot approve your child for free or reduced price meals. You must include the social security number of the adult household member who signs the application. The social security number is not required when you apply on behalf of a foster child or you list a Supplemental Nutrition Assistance Program (SNAP), Temporary Assistance for Needy Families (TANF) Program or Food Distribution Program on Indian Reservations (FDPIR) case number or other FDPIR identifier for your child or when you indicate that the adult household member signing the application does not have a social security number. We will use your information to determine if your child is eligible for free or reduced price meals, and for administration and enforcement of the lunch and breakfast programs. We MAY share your eligibility information with education, health, and nutrition programs to help them evaluate, fund, or determine benefits for their programs, auditors for program reviews, and law enforcement officials to help them look into violations of program rules.

Non-discrimination Statement: This explains what to do if you believe you have been treated unfairly. "In accordance with Federal law and U.S. Department of Agriculture policy, this institution is prohibited from discriminating on the basis of race, color, national origin, sex, age, or disability. To file a complaint of discrimination, write USDA, Director, Office of Civil Rights, 1400 Independence Avenue, SW, Washington, D.C. 20250-9410 or call (800) 795-3272 or (202) 720-6382 (TTY). USDA is an equal opportunity provider and employer."

Meals Program is Good for District

It is a common misconception that families who receive free or reduced price meals are costing our school money. Actually, the opposite is true...they are helping us receive funding.

Did you know that by applying for meal benefits you are helping our school district with funding for many other programs? Both the state and federal governments use the number of students eligible for free and reduced price meals to determine the degree of need in our district. This level of need is then used to determine much of our funding for school programs such as technology and "At-Risk."

The government also reimburses us for every meal that is eaten by children who have been approved for this program. There is no cost to the lunch program for your participation. Please, if you are in doubt as to whether or not you should apply, we encourage you to do so.

We maintain the strictest possible level of confidentiality when dealing with your personal information.



form continued from page 13

Part 7 - Foster Children In most cases foster children are eligible for free meals regardless of your household income.
 Foster Home License Number: _____ (optional)
 A. The welfare agency or court is legally responsible for the child and the foster home is, in fact, an extension of the welfare agency or court.
 B. The child is a resident of a licensed "Group Foster" home or residential institution.

Part 8 - Child's Racial/Ethnic Identity (optional)
Check One or More Racial Identities:
 American Indian or Alaskan Native Asian
 Black or African American White
 Native Hawaiian or Other Pacific Islander Other

Check One Ethnic Identity:
 Hispanic or Latino
 Neither Hispanic or Latino

Privacy Act Information: Social Security Number
 The Richard B. Russell School Lunch Act requires the information on this application. You do not have to give the information, but if you do not, we cannot approve your child for free or reduced price meals. You must include the social security number of the adult household member who signs the application. The social security number is not required when you apply on behalf of a foster child or you list a Supplemental Nutrition Assistance Program, Temporary Assistance for Needy Families (TANF) Program or Food Distribution Program on Indian Reservations (FDPIR) case number or other FDPIR identifier for your child or when you indicate that the adult household member signing the application does not have a social security number. We will use your information to determine if your child is eligible for free or reduced price meals, and for administration and enforcement of the lunch and breakfast programs. We MAY share your eligibility information with education, health and nutrition programs to help them evaluate, fund, or determine benefits for their programs, auditors for program reviews, and law enforcement officials to help them look into violations of program rules.

Non-discrimination Statement: This explains what to do if you believe you have been treated unfairly.
 "In accordance with Federal law and U.S. Department of Agriculture policy, this institution is prohibited from discriminating on the basis of race, color, national origin, sex, age or disability. To file a complaint of discrimination, write USDA, Director, Office of Civil Rights, 1400 Independence Avenue, SW, Washington, D.C. 20250-9410 or call (800) 795-3272 or (202) 720-6382 (TTY). USDA is an equal opportunity provider and employer."

VERIFICATION - FOR SCHOOL USE ONLY

Date Selected for Verification: _____		Date Follow-up/Second Notice: _____	
Confirming Officials Signature: _____		Follow-up Officials Signature: _____	
Response Due from Household: _____			
FAP/FIP Eligibility: <input type="checkbox"/> Not confirmed <input type="checkbox"/> Confirmed: Department of Human Services Notice of Eligibility	Income \$ _____ <input type="checkbox"/> Weekly <input type="checkbox"/> Wage Stubs <input type="checkbox"/> Every 2 weeks <input type="checkbox"/> Written Documents <input type="checkbox"/> Twice a month <input type="checkbox"/> Collateral Contact <input type="checkbox"/> Monthly <input type="checkbox"/> Agency Records <input type="checkbox"/> Annual <input type="checkbox"/> Other _____	Verification Result <input type="checkbox"/> Free to Reduced <input type="checkbox"/> Free to Paid <input type="checkbox"/> Reduced to Free <input type="checkbox"/> Reduced to Paid <input type="checkbox"/> No Change	Reason for Eligibility Change: <input type="checkbox"/> Income <input type="checkbox"/> Household Size <input type="checkbox"/> Refused to Cooperate <input type="checkbox"/> Other _____ Date of Adverse Notice Sent: _____ Verification Official's Signature: _____

APPROVAL/DISAPPROVAL - FOR SCHOOL USE ONLY

Annual Income Conversion: Weekly x 52, Every 2 Weeks x 26, Twice a Month x 24, Monthly x 12

Household Size: _____	<input type="checkbox"/> Foster Child <input type="checkbox"/> Categorical Eligibility	Reason for Denial: <input type="checkbox"/> Income Too High <input type="checkbox"/> Incomplete Application <input type="checkbox"/> Other (specify) _____
Total Gross Income: \$ <input type="checkbox"/> Weekly <input type="checkbox"/> Every 2 Weeks <input type="checkbox"/> Twice a Month <input type="checkbox"/> Monthly <input type="checkbox"/> Annual	Eligibility: <input type="checkbox"/> Free <input type="checkbox"/> Reduced <input type="checkbox"/> Paid <input type="checkbox"/> Temporary Free - Time Period: _____ (expires after _____ days)	

Determining Official's Signature: _____ Date: _____ Date Dropped/Withdrawn: _____

LEGAL NOTICES

ANNUAL REPORT INFORMATION PER BOARD POLICY #2700

The Sparta Area Schools' district and building Annual Report for the 2009-10 school year will be available on the district website (www.spartaschools.org) by October 15, 2010. Copies of the report will also be available in the district Board offices at 465 S. Union St.

2260A - GRIEVANCE PROCEDURES FOR TITLE VI, IX, AND SECTION 504

SECTION I

If any person believes that the Sparta Area Schools or any of the District's staff has inadequately applied the principles and/or regulations of (1) Title VI of the Civil Rights Act of 1964, (2) Title IX of the Education Amendment Act of 1972, and (3) Section 504 of the Rehabilitation Act of 1973, s/he may bring forward a complaint, which shall be referred to as a grievance, to the District's Civil Rights Coordinator: Mr. Mark Kasmer, Assistant Superintendent, 465 S. Union St., Sparta, Michigan 49345.

SECTION II

The person who believes s/he has a valid basis for grievance shall discuss the grievance informally and on a verbal basis with the local Civil Rights Coordinator, who shall in turn investigate the complaint and reply with an answer to the complaint. S/he may initiate formal procedures according to the following steps:

Step 1 - A written statement of the grievance signed by the complainant shall be submitted to the local Civil Rights Coordinator within five (5) business days of receipt of answers to the informal complaint. The Coordinator shall further investigate the matters of grievance and reply in writing to the complainant within five (5) business days.

Step 2 - If the complainant wishes to appeal the decision of the local Civil Rights Coordinator, s/he may submit a signed statement of appeal to the Superintendent of Schools within five (5) business days after receipt of the Coordinator's response. The Superintendent shall meet with all parties involved, formulate a conclusion, and respond in writing to the complainant within ten (10) business days.

Step 3 - If the complainant remains unsatisfied, s/he may appeal through a signed written statement to the Board of Education within five (5) business days of his/her receipt of the Superintendent's response in Step 2. In an attempt to resolve the grievance, the Board of Education shall meet with the concerned parties and their representatives within forty (40) days of receipt of such an appeal. A copy of the Board's disposition of the appeal shall be sent to each concerned party within ten (10) business days of this meeting.

Step 4 - If at this point the grievance has not been satisfactorily settled, further appeal may be made to the Office for Civil Rights, Department of Education, Washington, D.C. 20201.

Inquiries concerning the nondiscriminatory policy may be directed to Director, Office of Civil Rights, Department of Education, Washington, D.C. 20201.

The local Coordinator, on request, will provide a copy of the District's grievance procedure and investigate all complaints in accordance with this procedure.

A copy of each of the Acts and the regulations on which this notice is based, may be found in the Civil Rights Coordinator's office.

PARENTAL NOTIFICATION - Student Survey Participation per Board Policy #2416

No student shall be required - as part of the school program or the District's curriculum, without prior written consent of his/her parents, to submit to or participate in any survey, analysis or evaluation that reveals information concerning:

1. political affiliations or beliefs of the student's or his/her parents
2. mental or psychological problems of the student or his/her family
3. sexual behavior or attitudes
4. illegal, anti-social or self-incriminating behavior
5. critical appraisals of other individuals with whom respondents have close, family relationships
6. legally recognized relationships such as those of lawyers, physicians and ministers
7. religious practices, affiliations or beliefs of the students or his/her parents
8. income

Parents have the right to inspect, upon request, a survey or evaluation created by a third party before it is administered by the school to the student.

Sparta Area Schools Procedure for Identifying, Assessing, and Referring LEP Students

Identification of Students with Limited English Proficiency (LEP)

1. All families of new students to the district will be given the Home Language Survey. The Home Language Survey is written in both English and Spanish, since these are the two dominant languages spoken in our area. In the event the district encounters a family which is unable to verbally communicate in English or Spanish, the district will assess assistance from other school districts in the Kent County Intermediate School District.
2. Based on the level of English proficiency determined, the ESL staff will determine the appropriate placement and instructional service to be provided to the student.

Referral of LEP Students

1. The ESL staff will meet with the building counselor assigned to the student and/or the building administration to determine the appropriate class schedule and services to be provided to the student.
2. Students who are monolingual or are determined to be two years or more below grade level will be provided service by the district's Bilingual program.

Inquiries regarding nondiscrimination policies should be direct to: Nancy Smith, ESL Coordinator, Sparta Area Schools, 1655-12 Mile Road, Sparta, MI 49345, 616-887-2085.

DUAL ENROLLMENT GUIDELINES

Sparta Area Schools must notify parents and students in grades 8-12 regarding provisions of Public Act 160— Post Secondary Enrollment Options Act, which is more commonly known as Dual Enrollment. We consider this newsletter as our means to meet this obligation.

Public Act 160 requires school districts to use state school aid funds to pay college tuition and fees for high school students in grades 11 and 12 who choose to attend a Michigan public or private degree-granting post secondary institution, under certain conditions:

Requirements/conditions for Dual Enrollment:

1. Students are in grades 11 or 12.
2. Students meet the qualifying score(s) in one of the following assessments: MME, ACT, ACT PLAN, or College Board PSAT.
Note: Students are eligible to take courses such as computer science, foreign language, political science, or psychology as long as they have 'taken' all the sections of the MME, ACT, ACT PLAN or PSAT. State endorsement is not required in any specific area for this participation.
3. Students must be enrolled in both the post-secondary institution and the school district during the regular academic year.
4. The district must not offer the college courses.
Note: an exception may occur if the local board of education determines a scheduling conflict exists which is beyond the student's control.
5. The courses cannot be a hobby, craft, or a recreation course, or in the subject areas of Physical Education, Theology, Divinity, or Religious education.

Please contact the high school counselors for further information and details regarding Dual Enrollment.

FAMILY EDUCATIONAL RIGHTS & PRIVACY ACT

A parent or guardian shall be permitted to inspect all instructional materials used by the District in the instructional program. Instructional materials shall include teacher's manuals, films, tapes, or other supplementary materials.

Any questions or inquiries regarding the Family Education Rights & Privacy Act of 1974 (FERPA), should be directed to: Kent Swinson, Superintendent, Sparta Area Schools, 465 S. Union St., Sparta MI 49345

DIRECTORY INFORMATION

Dear Students and Parents in Sparta School District:

From time to time the district may be requested to make available certain information known as "directory information". The Board of Education designates student "directory information" as a student's name, address, telephone number, photograph, date and place of birth, major field of study, participation in officially recognized activities and sports, height and weight, if a member of an athletic team, dates of attendance; date of graduation; awards received, or any other information which would not generally be considered harmful or an invasion of privacy, if disclosed.

This notice is consistent with Board Policy #8330 Operations.

Parents and adult students may refuse to allow the district to disclose any or all of such "directory information" upon written notification of the district within twenty (20) school days after receipt of this notice.

Mr. Kent Swinson, Superintendent, Sparta Area Schools, 465 S. Union St., Sparta MI 49345

NOTICE OF NONDISCRIMINATION

The Sparta Area Schools does not discriminate on the basis of race, color, national origin, sex, age or disability in its programs and activities. In order to protect these rights and assure compliance, the Sparta Area School District has appointed Mr. Joe Droski as Coordinator of Title IX, Mr. Mark Kasmer as Coordinator of Title II, VI, and the Age Discrimination Act and Mrs. Susan Gates as the Coordinator of Section 504.

Inquiries concerning the application of, or grievances for, any of these regulations should be address to: Mr. Mark Kasmer, Assistant Superintendent, 465 S. Union St., Sparta MI 49345 (616) 887-8253

Any person who feels that the rights of an individual have been violated in relationship to the provision of equal opportunity in any education programs and activities, or in employment, may contact Mr. Kasmer.

ANNUAL WATER QUALITY REPORT

In compliance with public act 399 of 1976, the Michigan safe Drinking Water Act, R 325.10416, Sparta Area Schools has completed a source water assessment for White Early Childhood Center and Englishville High School. Water samples were collected and tested for: coliform bacteria, nitrates, arsenic, metals, volatile organic chemicals, synthetic organic chemicals, lead and copper. The water collected at both sites met Michigan's drinking water standards. A copy of the summary of water sampling data for both buildings is available, free of charge, upon request from: Operations Supervisor, Sparta Area Schools, 429 S. Union St., Sparta, MI 49345. You may also contact the Operations Supervisor by calling 616-887-0136 during normal business hours.

ANNUAL NOTIFICATION OF THE ASBESTOS MANAGEMENT PLAN

Our school district has conducted an extensive asbestos survey of all of our buildings. Based on the findings of this inspection, a comprehensive management plan was drafted. This plan details the response actions that the District will be taking regarding asbestos containing material found in our buildings.

Even though the High School, Ridgeview, Administration and Transportation buildings do not contain asbestos materials, in compliance with the US Environmental Protection Agency Asbestos Hazard Emergency Response Act (AHERTA) of 1990, we have an Asbestos Management Plan on file at the transportation office at 429 S. Union St., Sparta.

The Management Plan is available for inspection at our offices without cost or restriction during normal business hours.

Our goal is to make our schools a safe place in which students can learn. Our procedures for dealing with this problem reflects that concern. Please let us know if we can answer and questions.

PUBLIC NOTICE - ASBESTOS MANAGEMENT PLAN

The Sparta Area School District hereby provides notice to parents, guardians and the general public of the 2002 Asbestos Management Plan for the district.

In accordance with EPA 40 CFR Part 763 - Asbestos containing materials in buildings, please note:

Inspections, periodic re-inspections and surveillance, and related activities are ongoing within school district buildings according to EPA 40 CFR Part 763, Parts 1, 2, 3, and OSHA 29 CFR Parts 1910 and 1926.

Building management plans are available for review in the Operations Supervisor's Office. Questions may be directed to Tony Smolinski, 887-7507 ext. 206

PESTICIDE ADVISORY TO ALL PARENTS OF SPARTA AREA SCHOOL STUDENTS

Dear Parent/Guardian:

As a part of the Sparta Area School District's pest management program, pesticides are occasionally applied. You have the right to be informed prior to any pesticide application made to a school, day-care, or grounds. Advanced notice will be given by posting at the entrance to the school, day care, or grounds. In certain emergencies, pesticides may be applied without prior notice, but you will be provided notice following any such application. Parents requesting prior notification must complete a notification form yearly. The information below can be filled in and submitted to:

Director of Operations, Sparta Area Schools, 429 S. Union St., Sparta, Michigan 49345

You may also contact the Transportation Office at 616-887-0136 if you have any further questions regarding this letter.

.....
•
• PESTICIDE PRIOR NOTIFICATION REQUEST
• Parent/Guardian Name: _____
• Student Name: _____ School: _____
• Street Address: _____
• City: _____ Zip Code: _____
• Telephone Number: Daytime: _____ Evening: _____
• Please Check Any One:
• ___ I wish to be notified prior to a scheduled pesticide treatment inside of the building.
• ___ I wish to be notified prior to scheduled pesticide treatment on the outside grounds of the school.
• ___ I wish to be contacted by phone, e-mail or written information to my child (circle one)
• E-mail address: _____
• Signature _____ Date _____



DISTRICT NEWS

Reproductive Health Update

Public school districts are required to teach about dangerous communicable diseases, including but not limited to HIV and AIDs. In addition, public schools may choose to teach sex education. In most school districts, including Sparta, abstinence is stressed throughout the instruction.

Over the course of the past year, following much time spent in research and discussion, the district's Reproductive Health Advisory Committee - made up of community members, staff and students, reviewed the curriculum and recommended that some level of instruction on birth control and contraception be included. This additional instruction reframes Sparta's curriculum from being "abstinence only" to an "abstinence based" curriculum. The Board approved this change. An additional lesson on the legal consequences for engaging in sex with anyone under the age of consent may be offered to high school students.

Sparta middle and high schools have long had instructors from the Pregnancy Resource Center provide instruction around reproductive health to our 8th and 9th graders. These lessons (12 at 8th grade and 8 at 9th grade, using the Willing to Wait Sex and Relationship Program) receive high marks from students. PRC will continue to be the instructional provider.

During the coming school year, the Advisory Board will identify additional resources and methods (meetings, website links, brochures...) for providing reproductive health information to students and parents. In addition, they will be sharing Sparta's student responses to the Mi-Phy survey which reveals rates of reported sexual activity, drug and alcohol use and more.

2010 SEA Scholarship Recipient



The Sparta Education Association Scholarship is a gift from all of the professional staff members of Sparta Area Schools. Sparta's professional staff supports a college bound student who plans to pursue a career in education. The 2010 winner of the Sparta Education Association Scholarship is SHELBY MANSON. Shelby has been chosen as the winner because of her academic success and her commitment to helping children.

Congratulations, Shelby!

Get Your Flu Shot Early

Nurse Amy has scheduled at Flu Shot Clinic
Wednesday, August 13, 3:00 - 5:00 p.m. in the Administration Board Room

COMMUNITY CORNER

Sparta Youth Football Sign-ups

Flag Football signup dates:
When: Mon., Aug. 30 & Tues., Aug. 31
Where: High School Football practice field
Cost: \$25, includes shirt & trophy.
Games and practices are held Tues. & Thurs. 6-7pm.

Rocket Football signup dates:
August 3, 5, 11—6:00-8:00 pm, Appleview
August 14—9:00 am-1:00 pm, Appleview

Medical Information and Birth Certificates need to be present at sign-ups.

Meet the Coach Night/Parents Night
Thursday August 19th, 7pm Football Stadium

If you are interested in being part of Sparta Youth Football contact Jim Gleason, 616-514-9773 or Bob Leach, 616-299-7169
For more information, visit www.eteamz.com

Cornwell's Dinner Theatre presents...

"It's a Wonderful Life"

Come and watch as this holiday classic is performed in the style of the golden age of radio. Listen in as radio station WTVR brings a live broadcast of this treasured story. This is a production that literally evokes laughter and tears but most of all, it will bring back memories of a story that the world loves and many of us grew up. Join us as we are transformed into a 1940's radio hall, complete with sound effects, artists, singing sponsors and old-fashioned holiday spirit.

When: Saturday, Nov. 6, 2010

Cost: \$57 includes bus, dinner, and play.

It's never too early!! For more information or to reserve your seat, call 887-7321.



SPARTA ATHLETICS

Fall Sports begin in August

- HS Football & Sideline Cheer.....Monday, August 9, 2010
- All other HS SportsWednesday, August 11, 2010
Volleyball, Cross Country for Girl and Boys, Boys Soccer and Boys Tennis
- MS FootballThursday, August 26, 2010
- All MS SportsTuesday, September 7, 2010
Volleyball, Cross Country and Sideline Cheer

Middle School and High School Athletes and Parents

PHYSICALS: The first and most important item is that any potential athlete needs a yearly physical examination. The physical for any school year must be done on or after April 15. Without a physical exam on file, the student may not even try out for a team.

ACTIVITY FEES: Again this year, there will be an **activity fee** charged to participate in athletics. The **fee is set at \$75.00 and is a once a school year fee**. There is a \$200.00 maximum per family. Students may participate in any athletic activity throughout the year once that fee is paid. In sports where cuts are made, the fee will not be collected until after the cuts. You may pay this activity fee in the Athletic office beginning August 11th or on line by accessing the Sparta Area Schools web site; www.spartaschools.org then click on the payschools link and you will be walked through the process.

GRADES/ELIGIBILITY: The students will also be required to be in good standing with their grades. The students will have their grades checked on a weekly basis and if the student is deficient in more than one class for two weeks they will be ineligible for the following week. At the High School level students must have passed 3 out of 4 blocks with a 70% or higher and have a 2.00 GPA.

SPORTS PASSES: Along with the opportunity to purchase your student/athletes activity fee on line you may also order/purchase **athletic passes for the 10-11 home sports season** on payschools. Once again access the schools web site; www.spartaschools.org and simply click on that link and it will walk you through the process. **Please note: you may order/purchase on line, but will have to stop by the Athletic Office to pick your passes up; we cannot mail all of those. The OK Blue Conference will be charging five (\$5.00) admission** for all contests beginning this fall. Our home sports passes have not changed in price; those prices are:

Adult:	\$75.00 all year	\$35.00 one season
Student:	\$50.00 all year	\$25.00 one season
Family:	\$150.00 all year	\$80.00 one season

Sparta Sports Boosters meets the third Monday of each month. This group has raised funds to help offset cuts and a higher activity fee. All parents are asked to be an active member of this group. (If you have students in sports, you are already a member!)

Any questions, contact the Athletic office at 887-2098.



HOWARD CHRISTENSEN NATURE CENTER

16190 Red Pine Dr.
Kent City
Call (616) 675-3158 or

Visit our website www.kentconservation.org/hcnc for upcoming events, directions, a trail map, and information about field trips and renting the Red Pine Center for receptions, parties or retreats. Questions? Please call (616) 675-3158, or send an e-mail to hcnc@kentconservation.org.

Class of 1980 30-Year Reunion!!

When: Sat., Oct. 2, 2010

Where: Sparta Moose Lodge

Time: 7ish, more details later

Cost: \$10 per person
\$15 per couple

RSVP: Carol Capek on Facebook or cjcapek@aol.com
Tim Potes, 616-498-2565
Karen Marohn,
Karen@handywacks.com

BOARD MEMBERS

Warren Hill	President
Carol Shirey.....	Vice President
Julie McCallum	Secretary
Clay Brown	Treasurer
Jim Kerby, M.D.....	Trustee
Nick Lewis	Trustee
Tom DuPont	Trustee

MANAGEMENT TEAM

Mr. Kent Swinson.....	Superintendent.....	887-8253
Mr. Mark Kasmer	Assistant Superintendent	887-8253
Mr. Mike O'Connor.....	Director, Adult Education	887-7321
Ms. Marialyce Zeerip.....	Director, District Grants & Auxiliary Programs	887-7321
Mr. Matt Spencer.....	Principal, Sparta High School & Englishville High School.....	887-8213
Mr. Cary Stamas.....	Assistant Principal, Sparta High School	887-8213
Mr. Joe Droski.....	Athletic Director	887-2098
Mr. Joel Stoner	Principal, Sparta Middle School	887-8211
Mr. Steve Johnson.....	Assistant Principal, Sparta Middle School	887-8211
Mr. Kris Vydareny	Principal, Appleview Elementary	887-1743
Ms. Nicole Peterson.....	Principal, Ridgeview Elementary	887-8218
Mr. Tim Kleaveland.....	Food Service Director.....	887-1744
Mrs. Susan Gates	Supervisor of Special Education.....	887-7359
TBD.....	Director, Transportation/Operations	887-0136

BOARD OF EDUCATION MEETINGS

Meetings are generally held on the second Monday of the month at the Board of Education offices, 465 S. Union St., Sparta, MI 49345. Meetings are open to the public and begin at 7:30 p.m.

The Bell Ringer is published by the Sparta Board of Education. Please call 887-8253 with inquiries.

The Sparta Area Schools does not discriminate on the basis of race, color, national origin, sex, age or disability in its programs and activities. In order to protect these rights and assure compliance, the Sparta Area School District has appointed Mr. Joe Droski as Coordinator of Title IX, Mr. Mark Kasmer as Coordinator of Title II, VI, and the Age Discrimination Act and Mrs. Susan Gates as the Coordinator of Section 504.